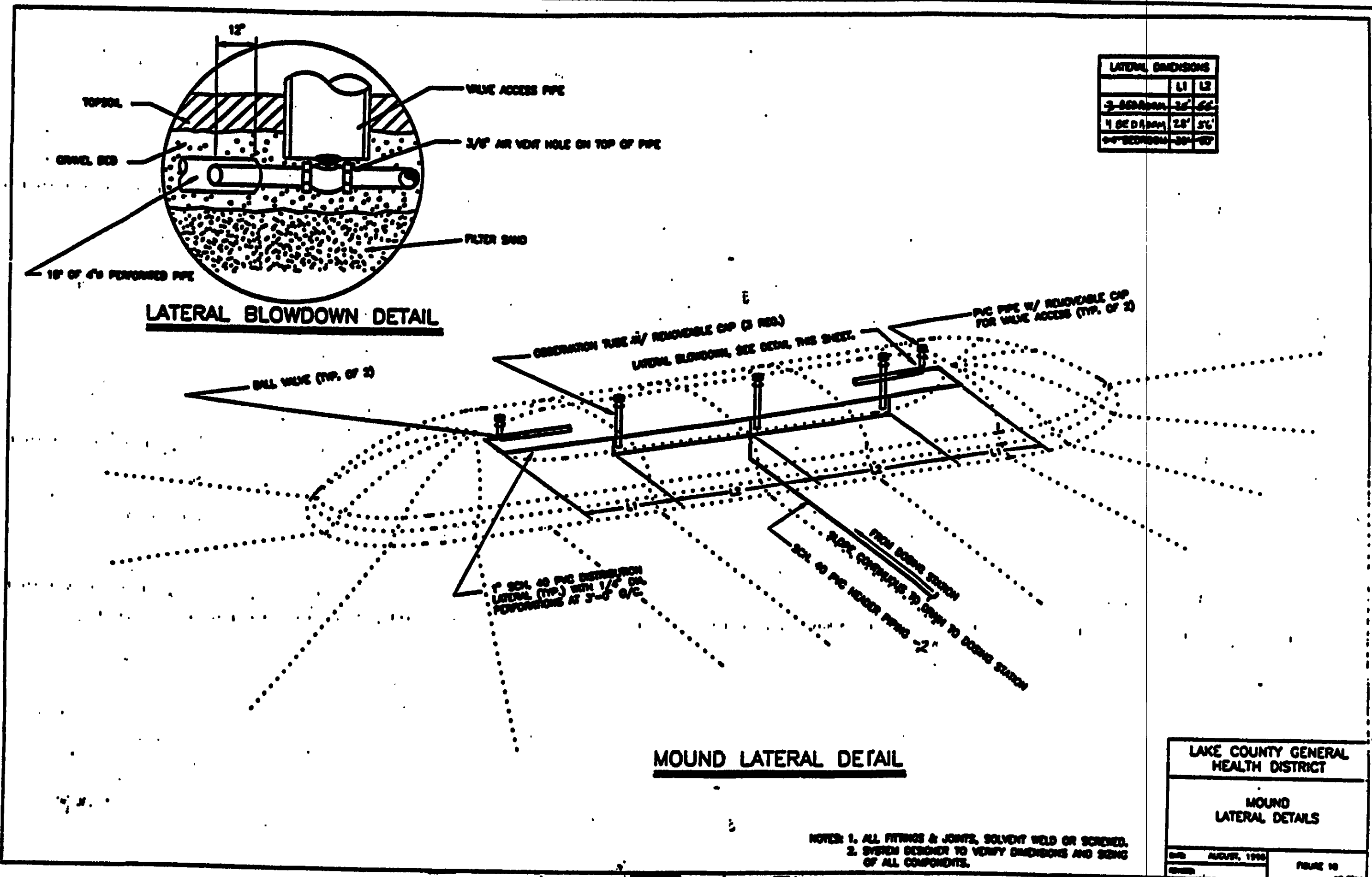


- NOTES
1. DESIGN STATION AND BASE TO PREVENT FLOTATION IN AREAS OF HIGH GROUND WATER.
 2. ALL JOINTS AND PENETRATIONS SHALL BE WATER-TIGHT TO PREVENT INFILTRATION OF GROUND/SURFACE WATER.
 3. STATION PUMP SHALL BE DESIGNED TO DOSE MOUND BASED ON THE TABLE BELOW:

TIME BETWEEN MIN. GALLONS PER GALLON	3 BEDROOM	4 BEDROOM	>4 BEDROOM
4 HOUR	~60	~40	~50
3 HOUR	~40	~30	~40
2 HOUR	~30	~20	~30
 4. FORCE MAIN, DISTRIBUTION LATERAL DESIGN AND DETAILED STATION INCLUDING DIMENSIONS AND ELEVATIONS SHALL BE SUPPORTED BY CALCULATIONS AND OTHER APPROPRIATE DOCUMENTATION IN PLAN SUBMITTALS.
 5. INSTALLATION SHALL MEET ALL APPLICABLE CODES/CRITERIA.
 6. CONTROL PANEL WITH VISUAL AND AUDIBLE HIGH LEVEL ALARM SHALL BE LOCATED IN THE GARAGE, BASEMENT OR OTHER SUITABLE INDOOR LOCATION.
 7. SPECIAL CONSIDERATION SHALL BE GIVEN WHEN DESIGNING A DOWNHILL PUMPING APPLICATION TO PREVENT SPHONING.
 8. WET WELL CAPACITY TO ACCOUNT FOR PIPING DRAWING BACK TO DOSING STATION.

- 1 ADAPTER COUPLING.
- 2 SCHED. 40 GALV. STL. ACROSS EXCAVATION.
- 3 SCHED. 40 PVC OR OTHER APPROVED PRESSURE PIPE MATERIAL.

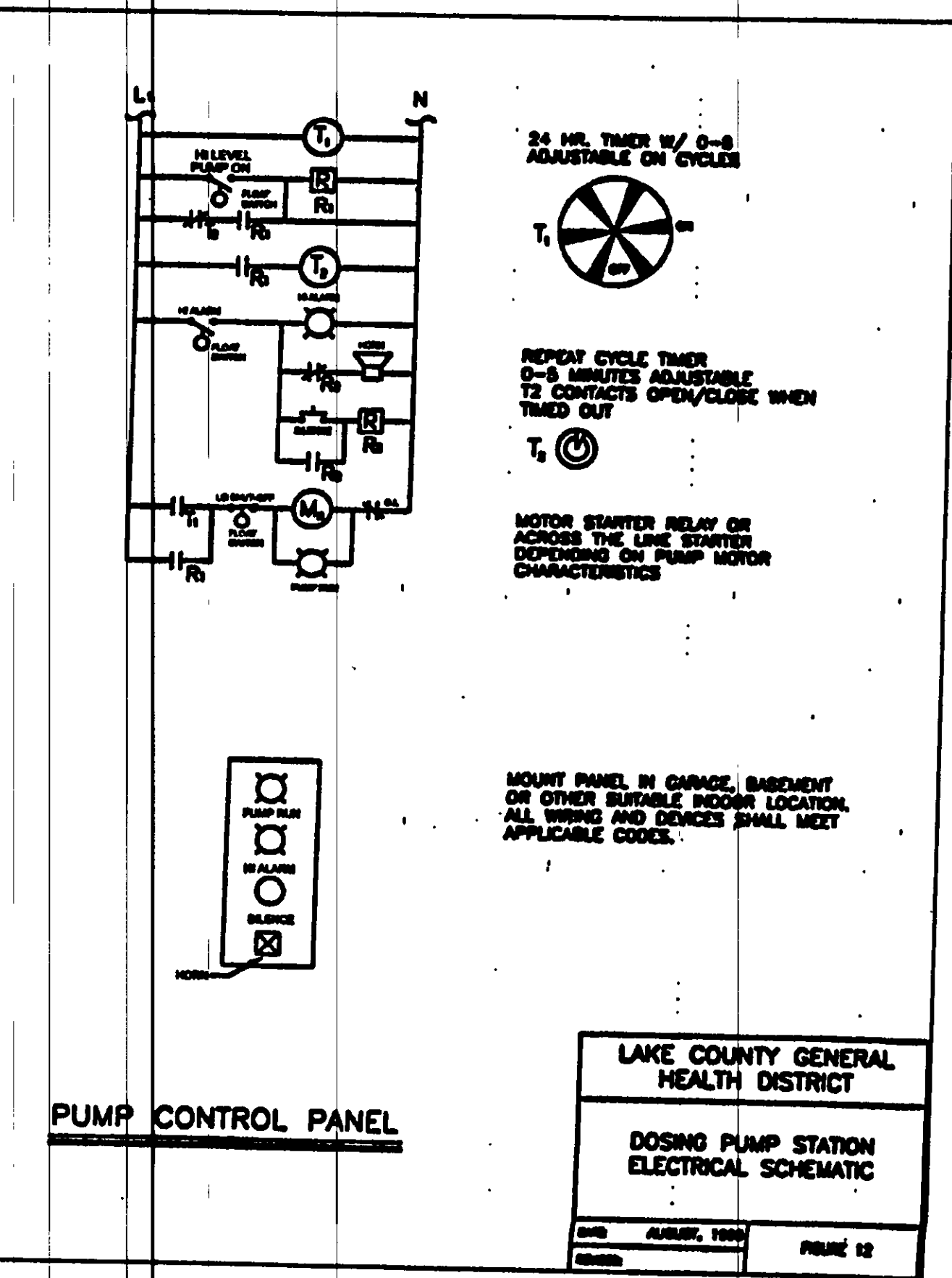
LAKE COUNTY GENERAL HEALTH DISTRICT
 LAKE COUNTY MOUND SYSTEM DOSING STATION
 DATE AUGUST, 1993
 FIGURE 11



LATERAL DIMENSIONS

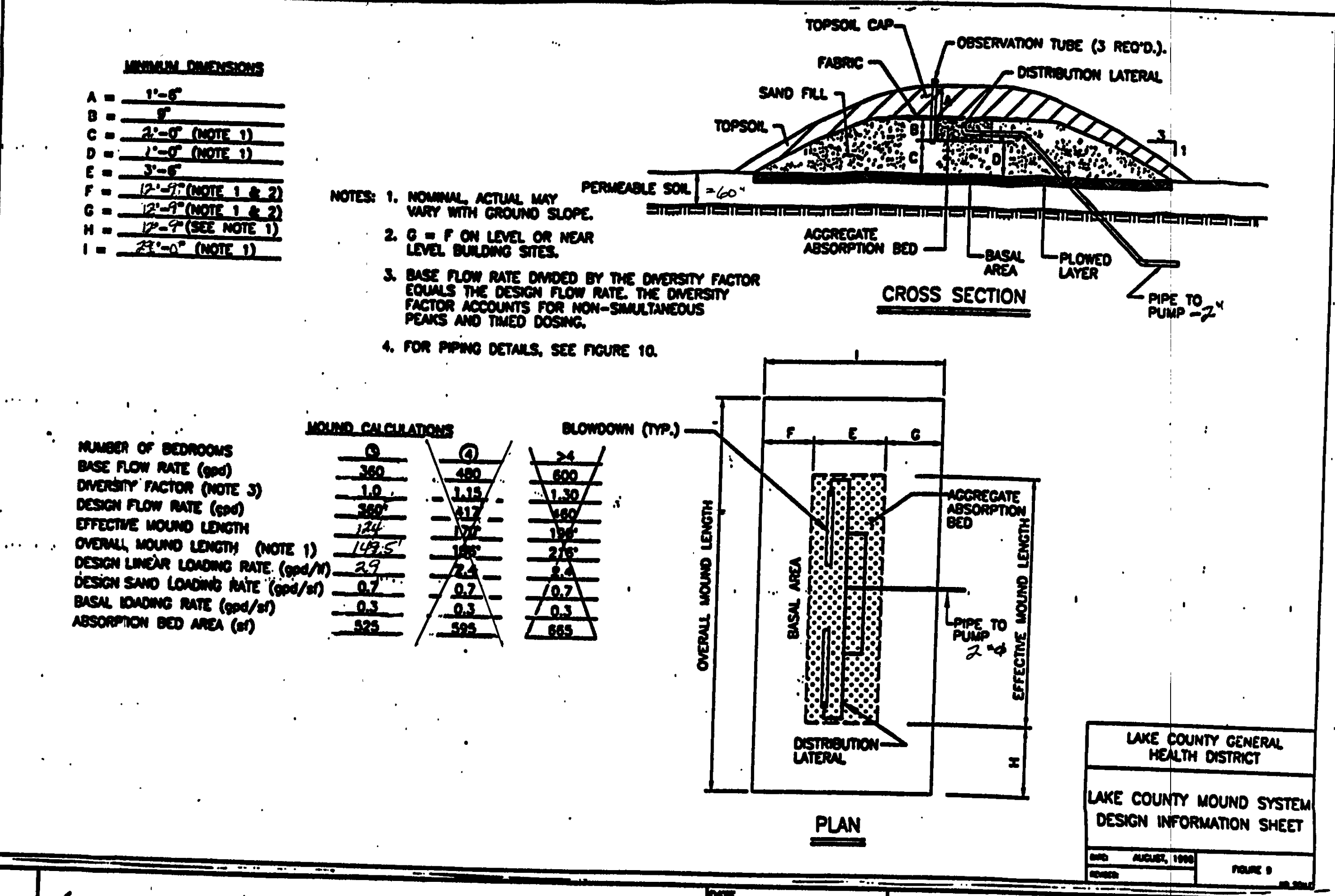
	1.1	1.2
3-BEDROOM	2'-0"	2'-0"
4-BEDROOM	1'-0"	1'-0"
>4-BEDROOM	1'-0"	1'-0"

LAKE COUNTY GENERAL HEALTH DISTRICT
 MOUND LATERAL DETAILS
 DATE AUGUST, 1993
 FIGURE 10



LAKE COUNTY GENERAL HEALTH DISTRICT
 DOSING PUMP STATION ELECTRICAL SCHEMATIC
 DATE AUGUST, 1993
 FIGURE 12

REV. NO.	DESCRIPTION	DATE	BY	CHKD.
1	REVISED MOUNTED	10/7/13	HJ	JT



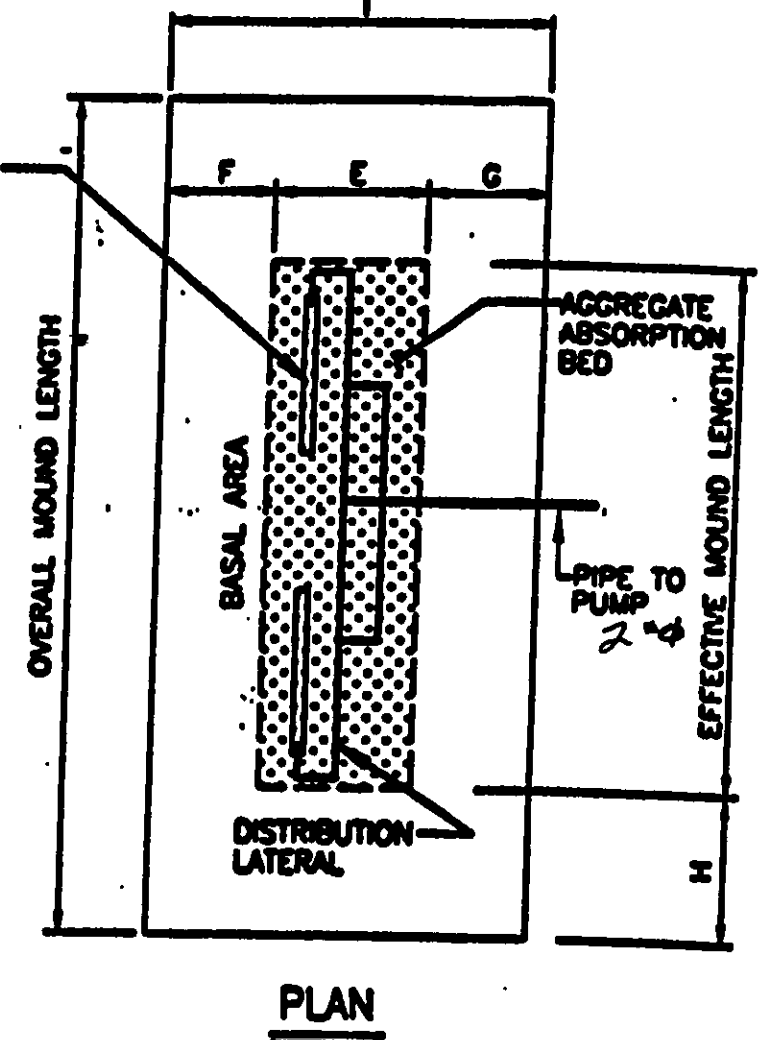
MINIMUM DIMENSIONS

A = 1'-6"
B = 6"
C = 2'-0" (NOTE 1)
D = 1'-0" (NOTE 1)
E = 3'-6"
F = 12'-0" (NOTE 1 & 2)
G = 12'-0" (NOTE 1 & 2)
H = 12'-0" (SEE NOTE 1)
I = 2'-0" (NOTE 1)

- NOTES:
1. NOMINAL ACTUAL MAY VARY WITH GROUND SLOPE.
 2. G = F ON LEVEL OR NEAR LEVEL BUILDING SITES.
 3. BASE FLOW RATE DIVIDED BY THE DIVERSITY FACTOR EQUALS THE DESIGN FLOW RATE. THE DIVERSITY FACTOR ACCOUNTS FOR NON-SIMULTANEOUS PEAKS AND TIMED DOSING.
 4. FOR PIPING DETAILS, SEE FIGURE 10.

MOUND CALCULATIONS

	3	4	5
NUMBER OF BEDROOMS	3	4	5
BASE FLOW RATE (gpd)	360	480	600
DIVERSITY FACTOR (NOTE 3)	1.0	1.15	1.30
DESIGN FLOW RATE (gpd)	360	417	460
EFFECTIVE MOUND LENGTH	124	177	199
OVERALL MOUND LENGTH (NOTE 1)	129.5	188	216
DESIGN LINEAR LOADING RATE (gpd/ft)	2.9	2.4	2.4
DESIGN SAND LOADING RATE (gpd/sf)	0.7	0.7	0.7
BASAL LOADING RATE (gpd/sf)	0.3	0.3	0.3
ABSORPTION BED AREA (sf)	525	595	665

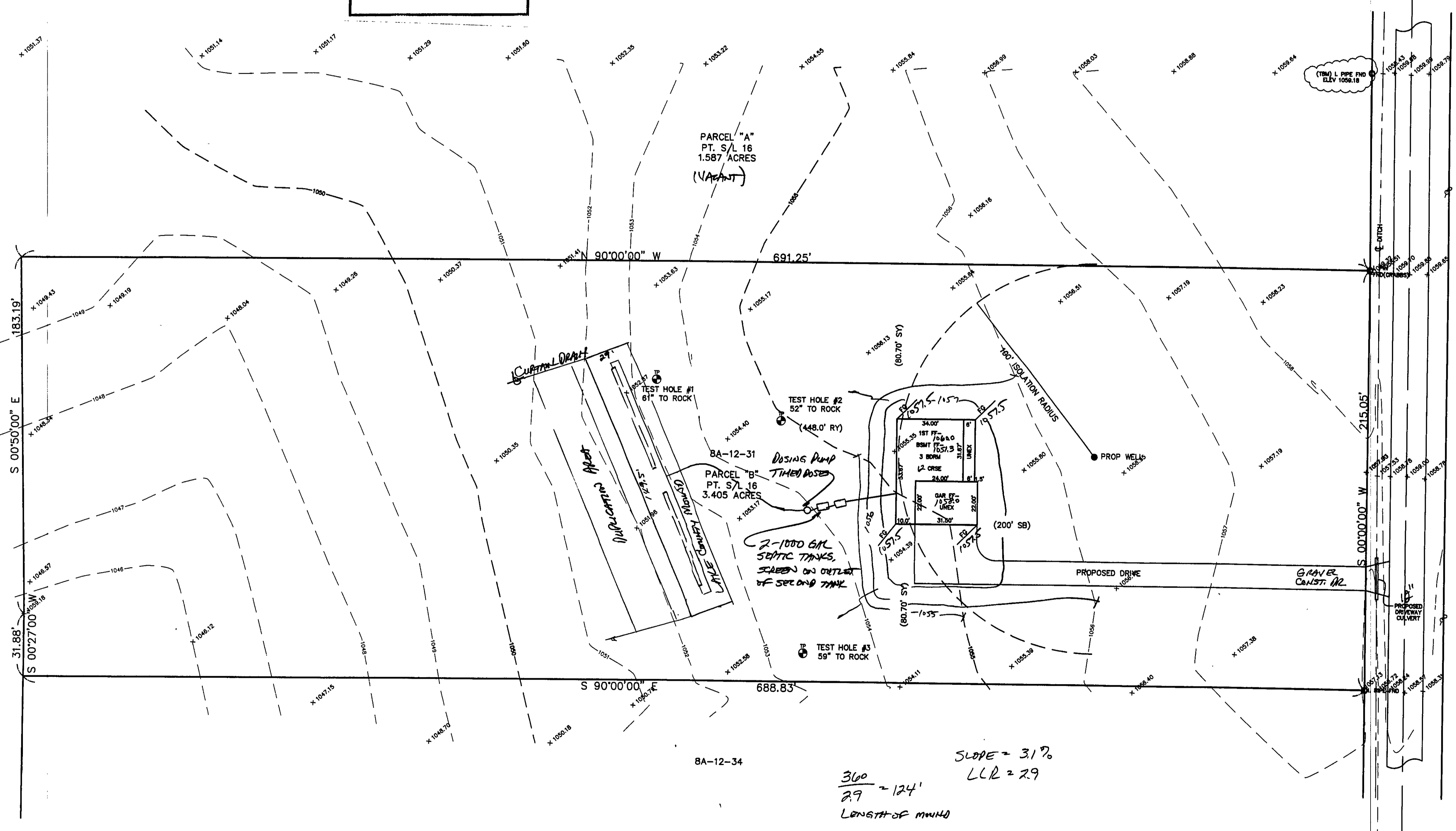
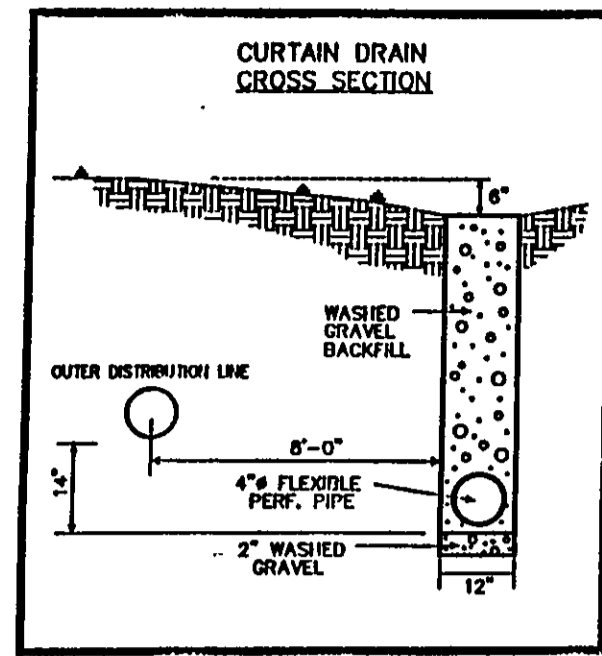


LAKE COUNTY GENERAL HEALTH DISTRICT
 LAKE COUNTY MOUND SYSTEM DESIGN INFORMATION SHEET
 DATE AUGUST, 1993
 FIGURE 9

bj BABCOCK, JONES AND ASSOCIATES, INC
 CIVIL ENGINEERS - SURVEYORS - LAND PLANNERS
 PAINESVILLE OHIO 44077

DATE 9/30/03
 DESIGN BY H.J.
 CHECKED BY T.R.
 APPROVED BY H.J.

SITE PLAN FOR
 SCOTT & TIHA SALIMEN
 CALLEPO TOWNSHIP
 SCALE: None
 SHEET 2 OF 2
 LAKE COUNTY



CONCORD TOWNSHIP ZONING OFFICE
 ZONING PERMIT # 1003-11334
 ISSUED 10/14/03
 SUBJECT TO APPROVAL BY:
 Lake Co. Sanitary Engineer
 Lake Co. Eng. Dept.
 Lake Co. Planning Comm.
 Lake Co. Building Dept.
 Lake Co. Soil & Water Cons. Dist.

REVIEWED AND ACCEPTED
 LAKE COUNTY GENERAL
 HEALTH DISTRICT
 Date 10-15-03
 [Signature]

SEWAGE DISPOSAL PERMIT MUST BE
 OBTAINED BY A LAKE COUNTY LICENSED
 INSTALLER BEFORE INSTALLATION IS
 STARTED.

"I, the undersigned hereby certify that this topography indicated by 6", 1", or 2' contours, and elevations shown hereon represent an actual field survey made by me on the 10th day of April, 2003 and that the elevations were taken at appropriate intervals and that as of that date they existed as indicated hereon."

[Signature] #6343
 Name Reg. No.

SOUTH ORCHARD ROAD - 40'

Stormwater Management Plan
 Approved as shown and/or noted
 JAMES R. GILLS, P.E.
 County Drainage Engineer
 By [Signature] Date 10/16/03

TBM - 2" IRON PIPE
 ELEV - 1059.18

EXISTING UTILITIES NOTE:
 THE SIZE AND LOCATION, BOTH HORIZONTAL AND VERTICAL OF THE UNDERGROUND UTILITIES SHOWN HEREON, HAVE BEEN OBTAINED BY A SEARCH OF AVAILABLE RECORDS. VERIFICATION BY FIELD OBSERVATION HAS BEEN CONDUCTED WHERE PRACTICAL. HOWEVER, BABCOCK, JONES AND ASSOCIATES, INC. DOES NOT GUARANTEE THE COMPLETENESS NOR ACCURACY THEREOF.



REV. NO.	DESCRIPTION	DATE	BY	CHK'D
1	ADDED TEST HOLES	4/24/03	H.J.	H.J.
2	REVISED CONTOURS	4/24/03	B.P.	H.J.
3	PUT HOUSE ON LOT	9/23/03	N.S.	H.J.
4	REVISSED SEPTIC TO MOUND	9/23/03	HT	HT
5	REVISSED MOUND	10/9/03	HT	HT

bj BABCOCK, JONES AND ASSOCIATES, INC
 CIVIL ENGINEERS - SURVEYORS - LAND PLANNERS
 PAINESVILLE OHIO 44077

DATE 4/21/03
 DESIGN BY HJ
 DRAWN BY NS
 APPROVED BY HJ

SITE PLAN
 FOR
SCOTT & TINA SALMINEN
 CONCORD TOWNSHIP LAKE COUNTY STATE OF OHIO

SCALE 1" = 30'
 JOB NO 03-058-A
 SHEET 1 OF 2