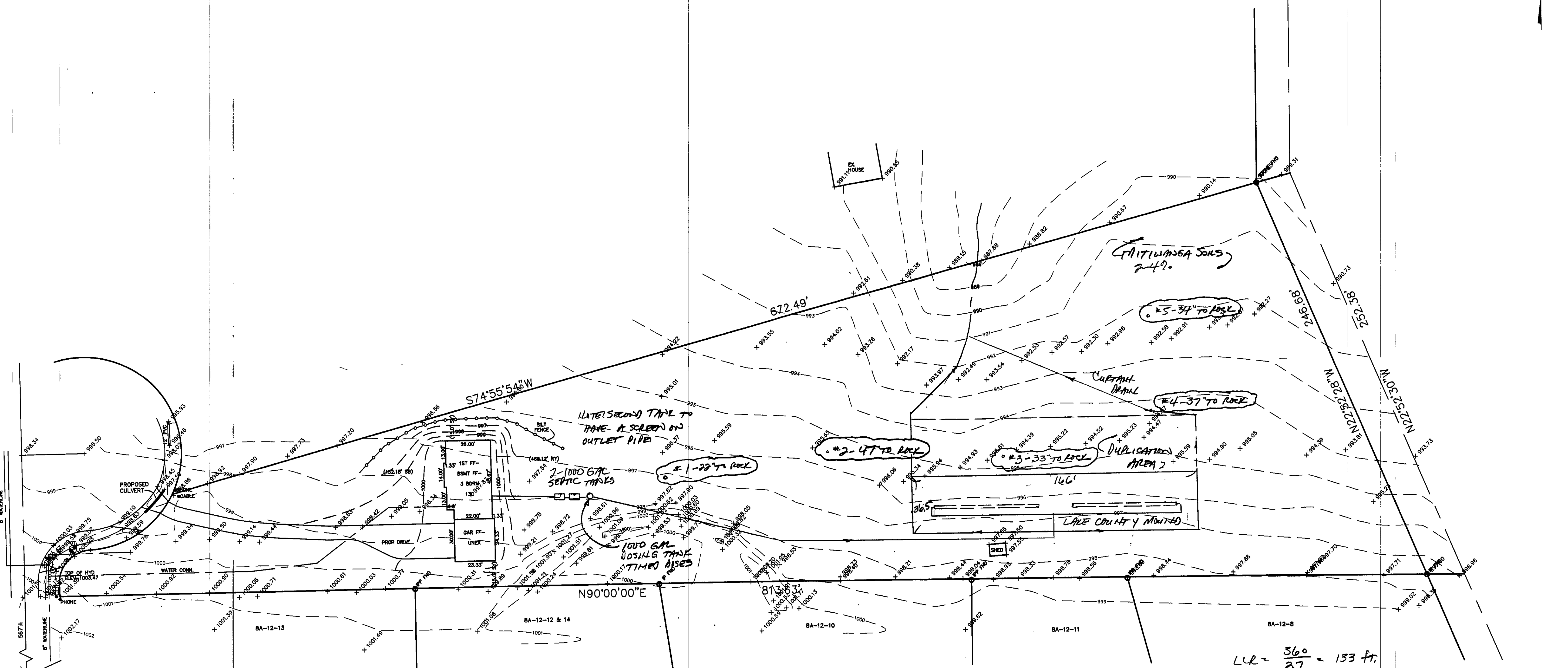


ORCHARD DRIVE (NORTH) - 40'



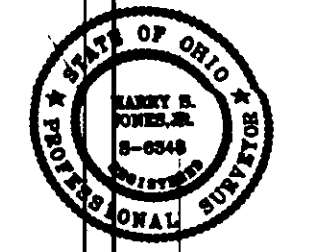
LLR =  $\frac{360}{27} = 133$  ft.  
33' TO ROCK -

TBM TSPH  
ELEV.-1003.47

CURVE	LENGTH	RADIUS	CHORD	BEARING
C1	29.08	19.00	26.33	S43°51'14\"W
C2	59.91	56.00	57.10	S57°03'25\"W

LINE	LENGTH	BEARING
L1	7.67	N00°00'00\"E

EXISTING UTILITIES NOTE:  
THE SIZE AND LOCATION, BOTH HORIZONTAL AND VERTICAL OF THE UNDERGROUND UTILITIES SHOWN HEREON, HAVE BEEN OBTAINED BY A SEARCH OF AVAILABLE RECORDS. VERIFICATION BY FIELD OBSERVATION HAS BEEN CONDUCTED WHERE PRACTICAL. HOWEVER, BABCOCK, JONES AND ASSOCIATES, INC. DOES NOT GUARANTEE THE COMPLETENESS NOR ACCURACY THEREOF.



"I, the undersigned hereby certify that this topography indicated by 6", 1', or 2' contours, and elevations shown hereon represent an actual field survey made by me on the 5th day of Dec, 2002 and that the elevations were taken at appropriate intervals and that as of that date they existed as indicated hereon."

Name: *Henry Jones* #6343  
Reg. No.

REVIEWED AND ACCEPTED  
LAKE COUNTY GENERAL  
HEALTH DISTRICT  
Date: 1-24-03 by *David Earl*

CONCORD TOWNSHIP ZONING OFFICE  
ZONING PERMIT # 0103-10885  
ISSUED 1/31/03  
SUBJECT TO APPROVAL BY:  
 Lake Co. Sanitary Engineer  
 Lake Co. Eng. Dept.  
 Lake Co. Planning Comm.  
 Lake Co. Building Dept.  
 Lake Co. Soil & Water Cons. Dist.

SEWAGE DISPOSAL PERMIT MUST BE OBTAINED BY A LAKE COUNTY LICENSED INSTALLER BEFORE INSTALLATION IS STARTED

REV. NO.	DESCRIPTION	DATE	BY	CHK'D
1	REVISED SEPTIC	12/19/02	H.J.	H.J.
2	REVISED SEPTIC TO MOUND	1/24/03	HT	HT
3	REVISED MOUND	1/23/03	HT	HT
4	REVISED MOUND	1/24/03	HT	HT

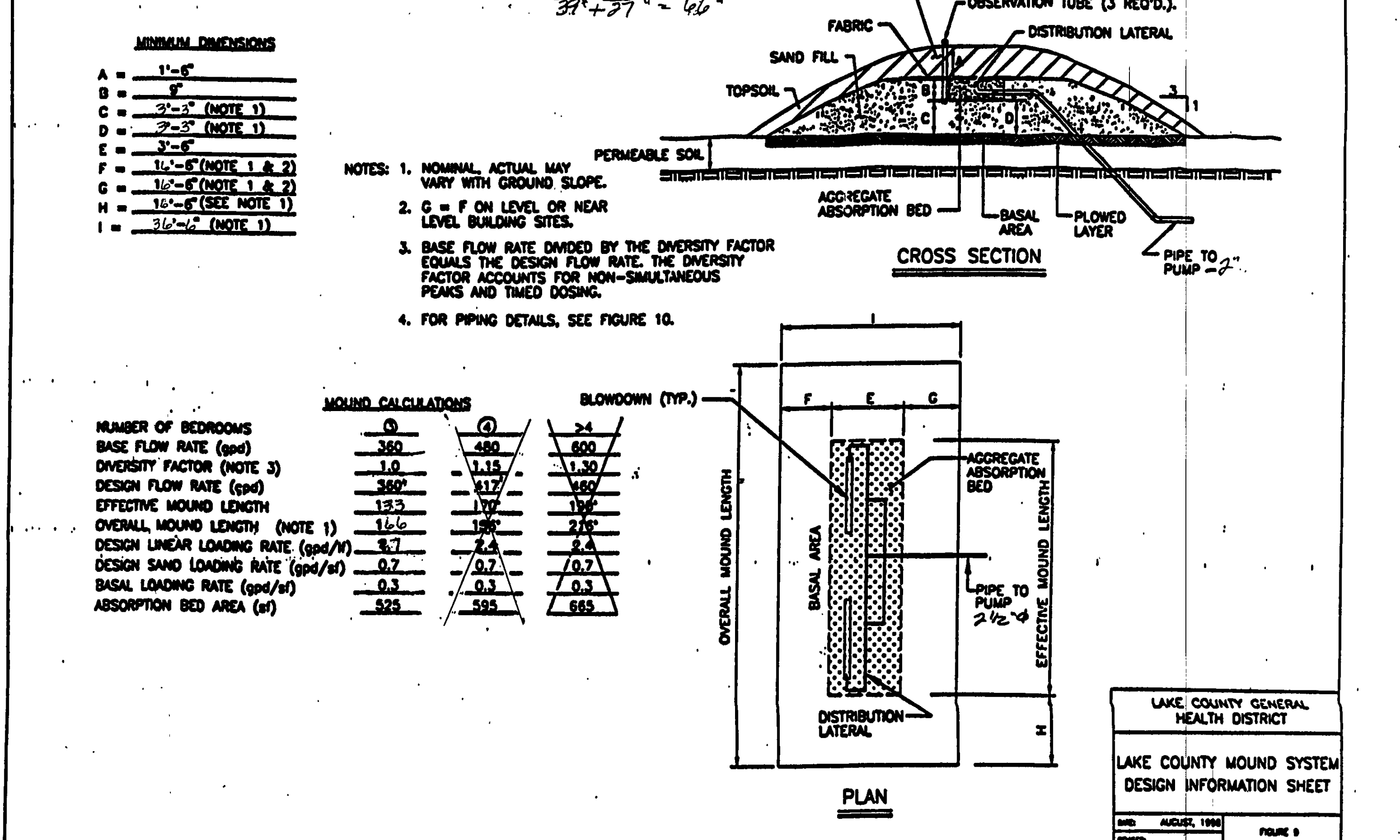
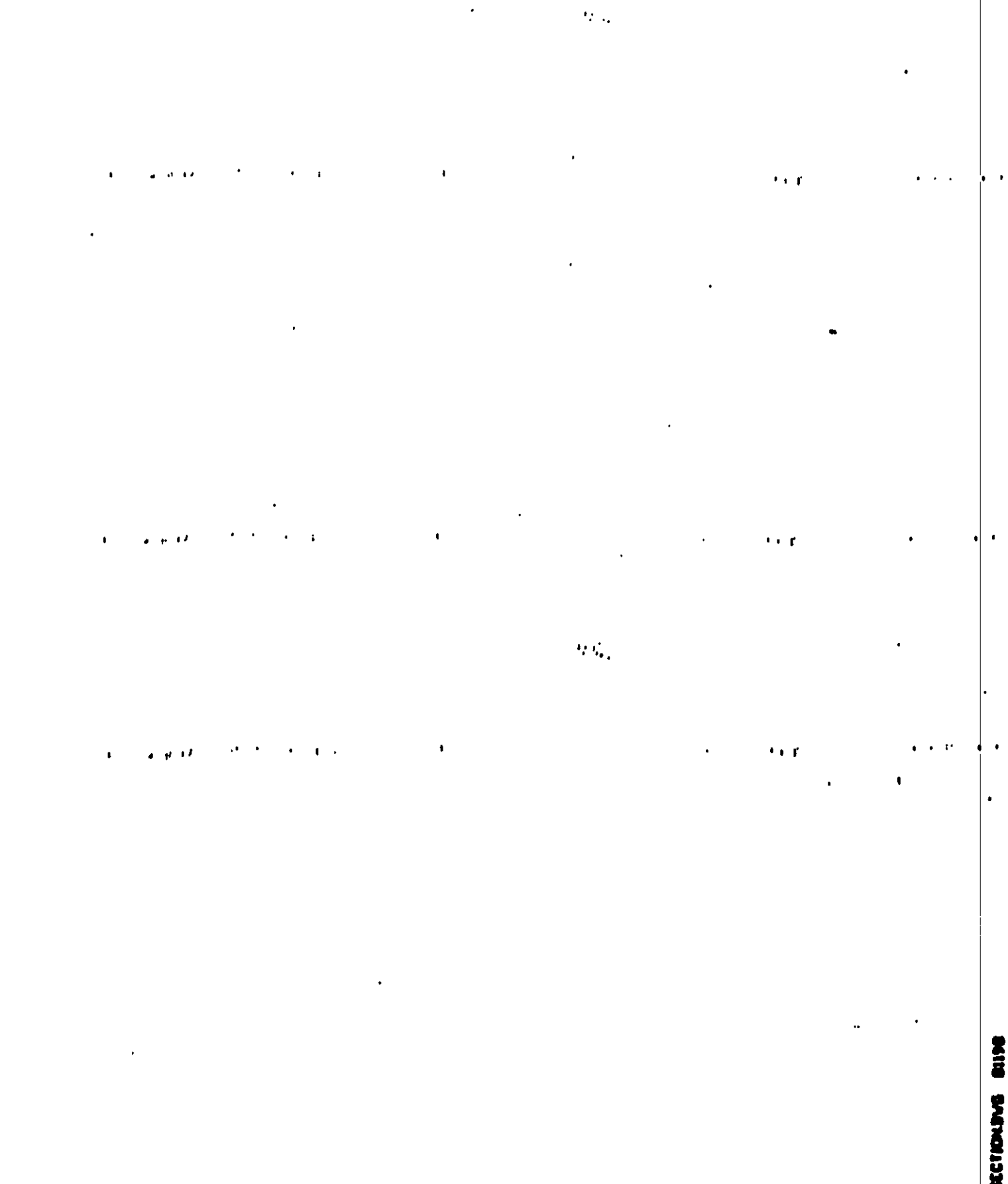
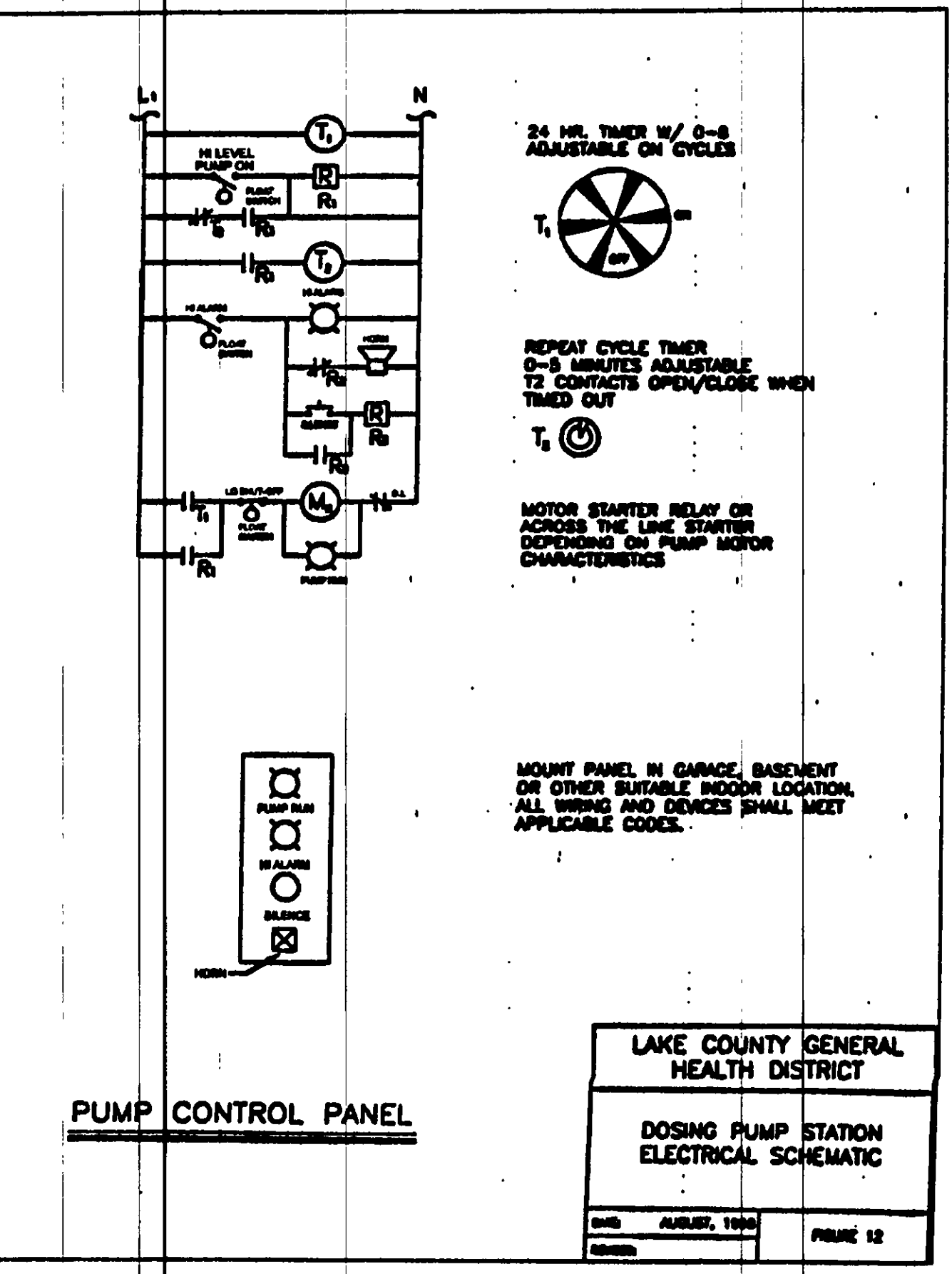
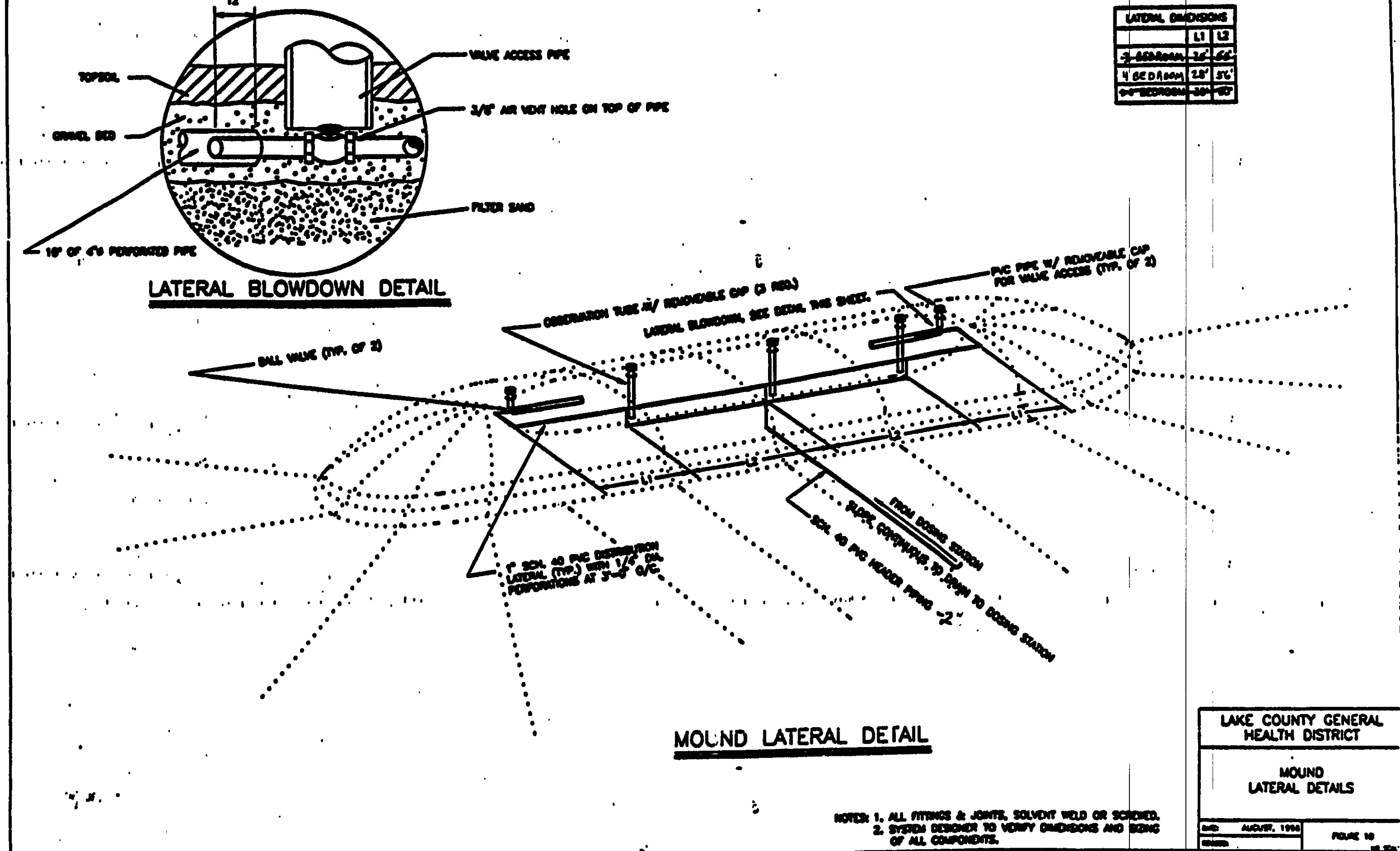
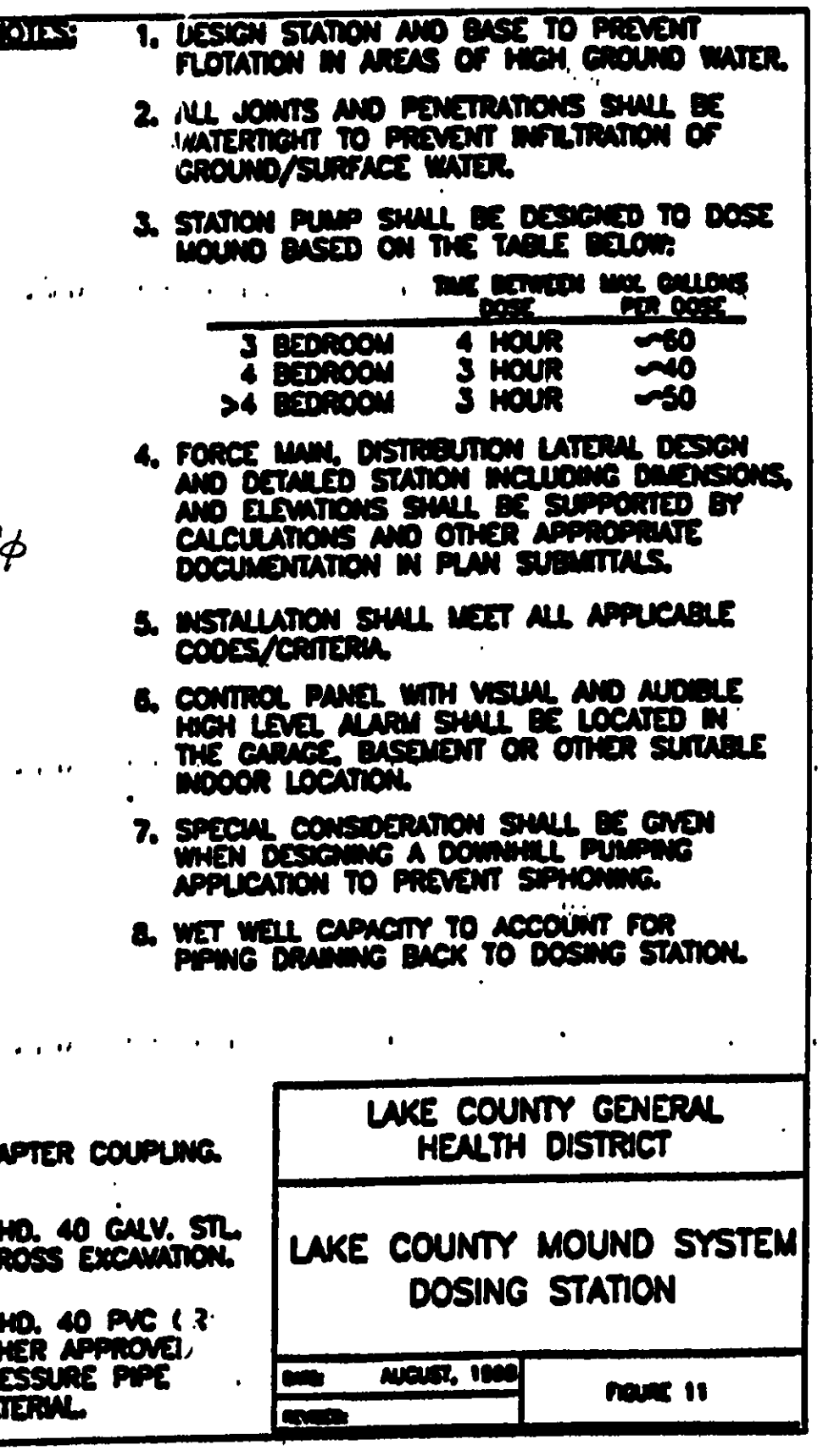
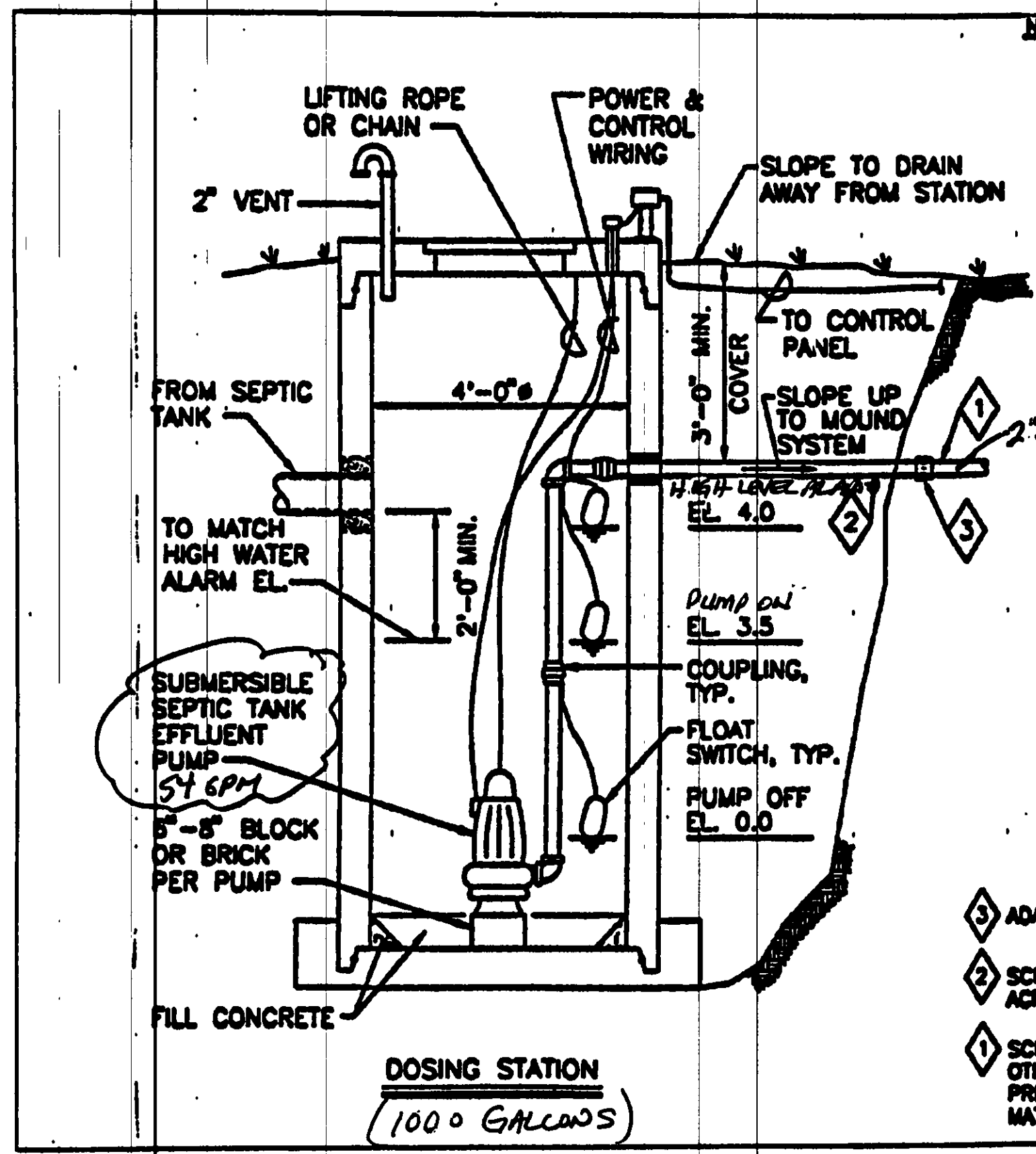
**bj** BABCOCK, JONES AND ASSOCIATES, INC.  
CIVIL ENGINEERS - SURVEYORS - LAND PLANNERS  
PAINESVILLE OHIO 44077

DATE 12/13/02  
DESIGN BY HJ  
DRAWN BY NS  
APPROVED BY HJ

SITE PLAN FOR STADEN HOMES

CONCORD TOWNSHIP LAKE COUNTY STATE OF OHIO

SCALE 1"=30'  
JOB NO. 02-278  
SHEET 2 OF 2



REV. NO.	DESCRIPTION	DATE	BY	CHK'D
1	REVISED MOUNTING OF MOUND	1-23-03	HT	HT
2	REVISED MOUND	1-24-03	HT	HT

**babcock, jones and associates, inc**  
 CIVIL ENGINEERS - SURVEYORS - LAND PLANNERS  
 PAINESVILLE OHIO 44077

DATE: 1/16/03  
 DRAWN BY: H.J.  
 CHECKED BY: T.R.  
 APPROVED BY: H.J.

**SITE PLAN FOR STADLER HOMES**

SCALE: None  
 JOB NO: 02-278  
 SHEET 2 OF 2  
 LAKE COUNTY 2 OF 2