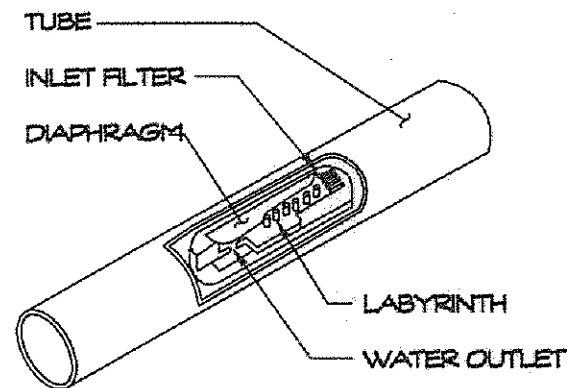


- NOTE**
- 1) THE AIR RELEASE VALVE SHALL BE PLACED AT THE HIGHEST POINT ON THE RETURN LINE OF EACH ONE.
 - 2) EACH ZONE TO HAVE THE SAME VALVE BOX SETUP AND THEREAFTER CONNECTED.

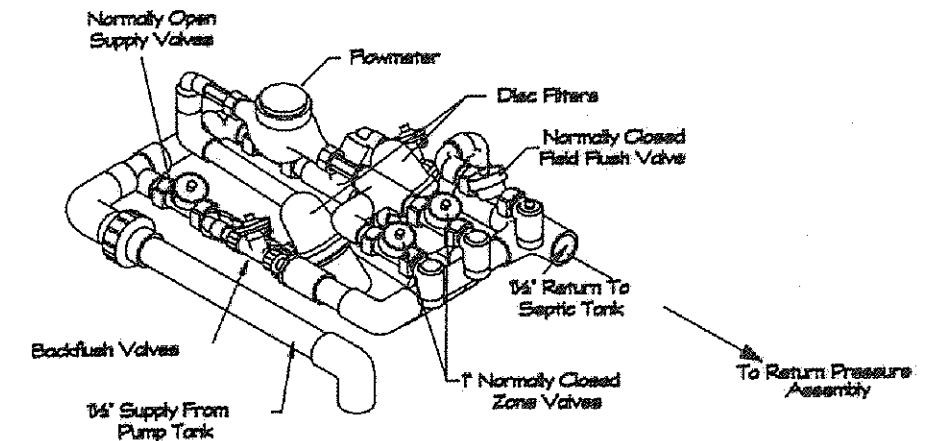
AIR RELEASE & CHECK VALVE DETAIL

NOT TO SCALE



NETAFIM PRESSURE COMPENSATION DRIPPERLINE

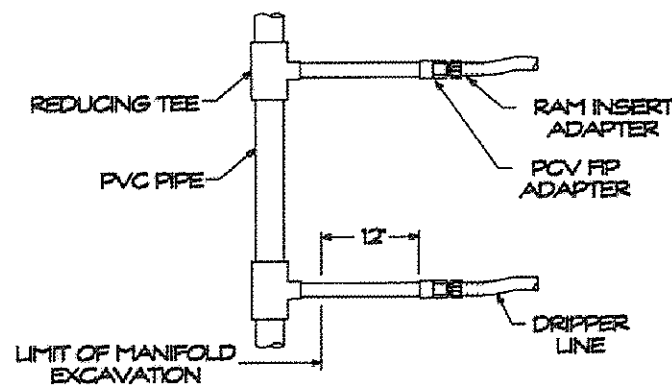
- NOTES:**
- EMITTER SHALL BE SELF FLUSHING
 - EMITTER INLET SHALL BE 0.26' FROM WALL OF DRIPPERLINE
 - EACH EMITTER SHALL CONTAIN A FILTER
 - EACH EMITTER SHALL HAVE A MECHANICAL BARRIER TO PREVENT ROOT INTRUSION.
 - EACH EMITTER SHALL PROVIDE 0.61 GPH FLOW RATE AT LINK PRESSURES BETWEEN 7 AND 60 PSI.



AMERICAN MFG. COMPANY TWO-FILTER - 15 GPM HYDRAULIC UNIT

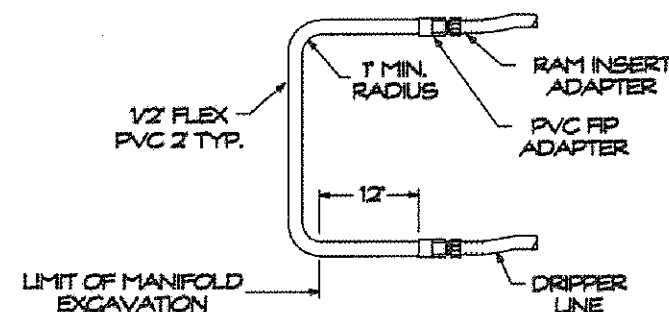
NOTE

IN THE EVENT THE DRIP ZONES ARE OVER 10 FEET IN VERTICAL ELEVATION ABOVE THE HYDRAULIC UNIT, INSTALL A 'RETURN PRESSURE ASSEMBLY.' THE ASSEMBLY IS TO BE USED TO PREVENT THE RETURN LINE FROM DRAINING AFTER OR DURING A DOSE. REMOVE THE ZONE RETURN CONNECTION AND REINSTALL A SHORT T NIPPLE IN THE RETURN VALVE. INSTALL ASSEMBLY AS SHOWN TO THE LEFT. THE HYDRAULIC TUBING PROVIDING PRESSURE FOR THE REST OF THE UNIT MUST BE PLUGGED AND THE NEW TUBING FROM THE ASSEMBLY CONNECTED TO THE PRESSURE SIDE OF THE SILENOID.



TYPICAL MANIFOLD CONNECTION

NOT TO SCALE



TYPICAL DRIP LOOP CONNECTION

NOT TO SCALE

KRB Engineering, Inc.

Professional Civil Engineering

330 Downing Drive
Chardon, Ohio 44024

Phone: (440) 286-7150
Email: krbender1@windstream.net

WASTEWATER TREATMENT DRIP DISTRIBUTION DETAILS

New Three Bedroom Home
9855 Little Mountain Road
Concord Twp., Lake County
March, 2011

SHT. 6/7