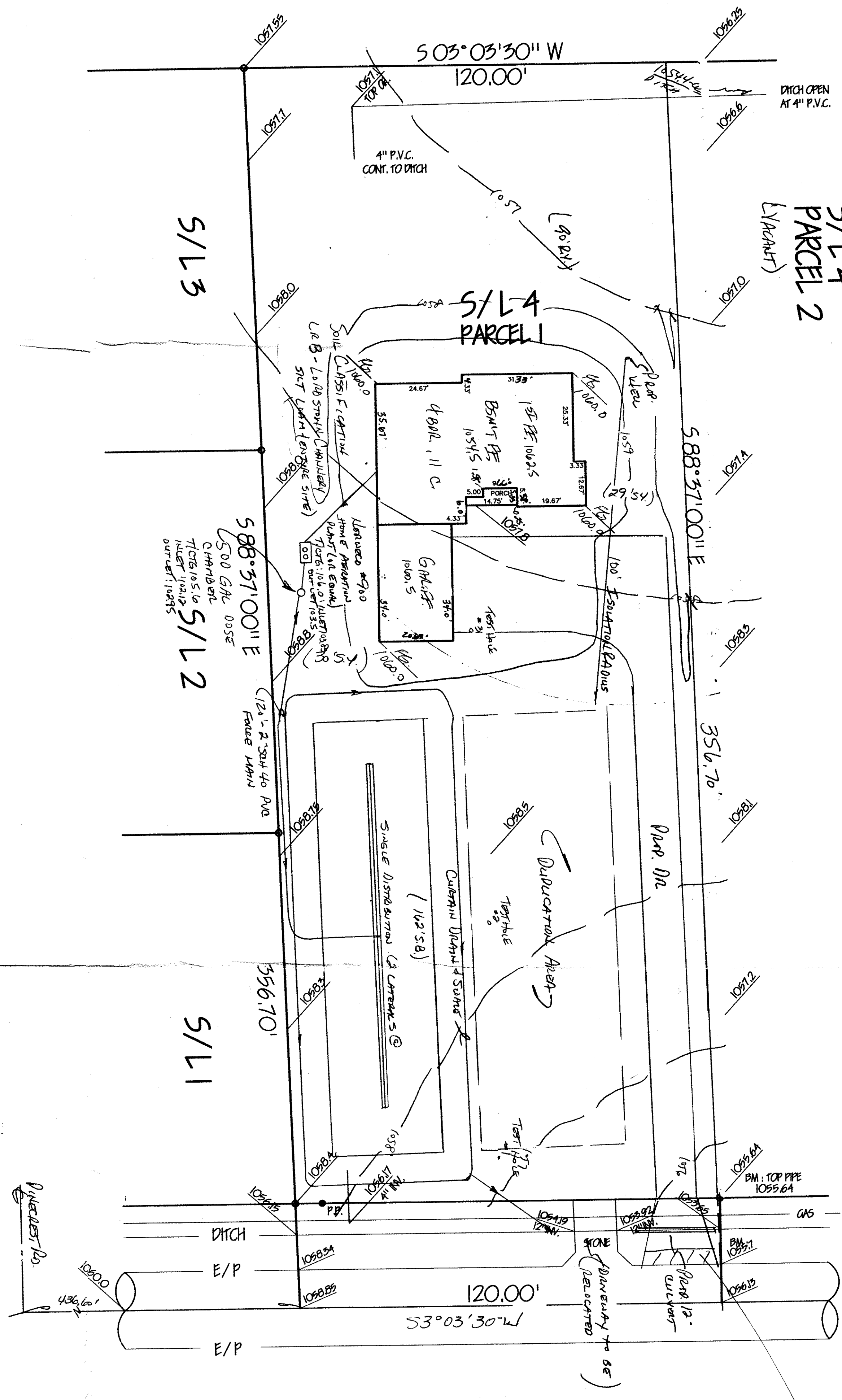


S/L 4
PARCEL 2
LYNCH



3' minimum above asphalt surface

REVIEWED AND ACCEPTED
LAKE COUNTY
HEALTH DISTRICT

10-1-97
David B. Rine

Grading Plan Approved
as shown and/or noted
THOMAS P. GILLES, P.E.
Lake County Engineer

By: 6/11 Date: 11/19/97

- Inspections to be conducted by design engineer at the following phases of construction:
1. After preparation of basal area
 2. After placement of the mound fill material and mound distribution laterals
 3. After placement of remaining fill, topsoil & seeding

Test Holes with depth to bedrock (feet)

#1	1.5
#2	3.0
#3	2.0

CONSTRUCTION NOTES

1. The undersigned hereby certify that the topography indicated by 6", 1" or 2" contours, and elevations shown hereon represent an equal field survey made by me on the 2nd day of July, 1997, and that the elevations were taken at appropriate intervals and that all of the data they contain is indicated herein.

Name: Harry S. Jones, Jr. Reg. No. 92493676

MOUND DIMENSIONS (FT.)

A	4.0	F	0.67	J	15.65
B	100.0	G	1.0	K	14.48
D	2.0	H	1.5	L	125.0
E	2.12	I	11.5	W	5.75

CUT TREES TO GRADE LINE, REMOVE EXCESS VEGETATION BY MOWING. PREPARE THE BASE GRADE BY MOWING PERPENDICULAR TO THE SLOPE. ROTOTILLING THE SITE IS NOT PERMITTED. CONSTRUCTION OF THE MOUND SHALL BE AS SOON AS THE BASE AREA HAS BEEN FLOWED. THE CONTRACTOR SHALL AVOID BURNING OF FLOWED AREA WITH VEGETATION TRACTOR.

EXTEND THE EFFLUENT PIPE TO SEVERAL FEET ABOVE THE GROUND SURFACE.

PLACE THE FILL MATERIAL WHICH HAS BEEN PROPERLY SELECTED AROUND THE EDGE OF THE FLOWED AREA, KEEP WHEELS OF FLOWED AREAS WET BY TRACTOR ON THE DOWN-SLOPE SIDE OF THE MOUND, WORK FROM THE BID AND UP-SLOPE SIDE.

MOW THE FILL MATERIAL INTO PLACE USING A SMALL TRACK TYPE TRACTOR WITH A BLADE. ALWAYS KEEP A MINIMUM OF 6" OF SAND BENEATH TRACKS TO PREVENT COMPACTION OF THE NATURAL SOIL.

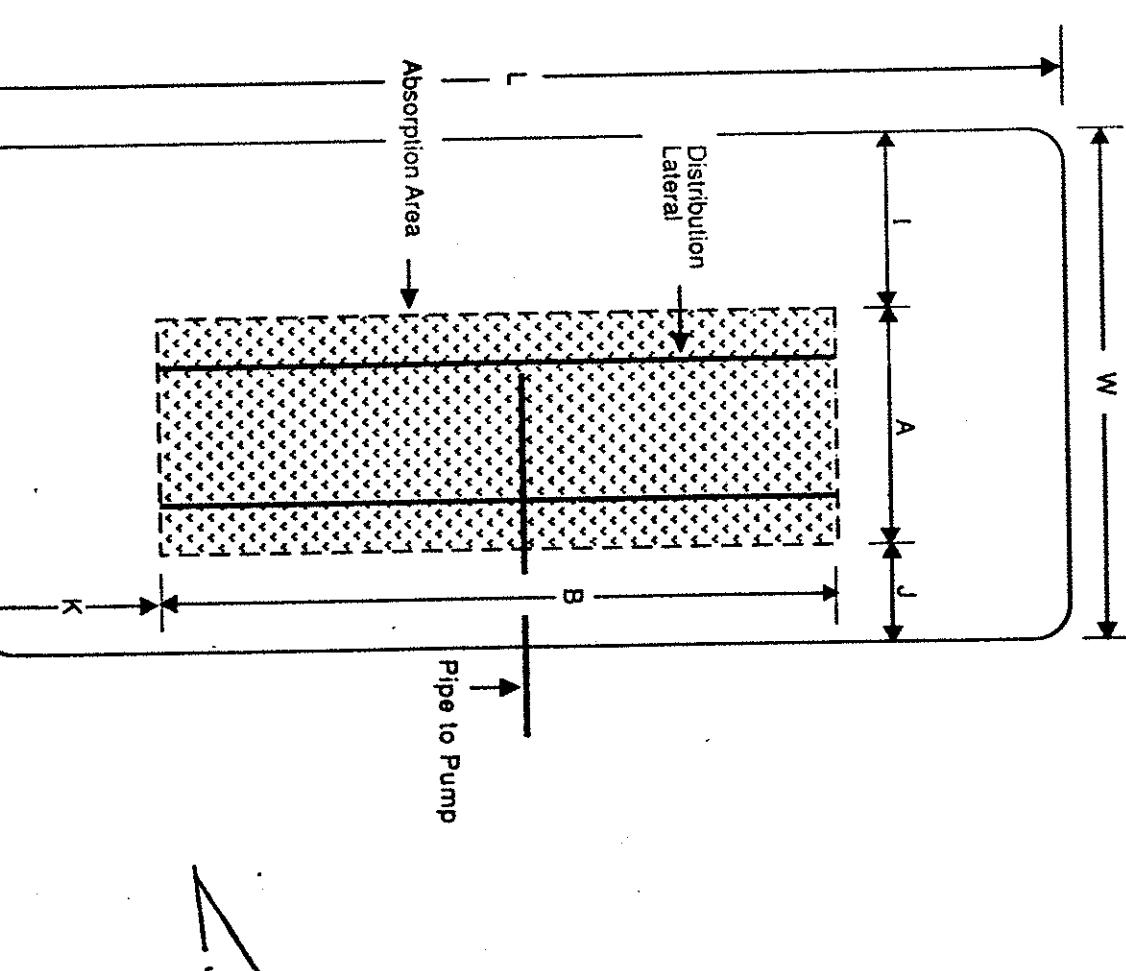
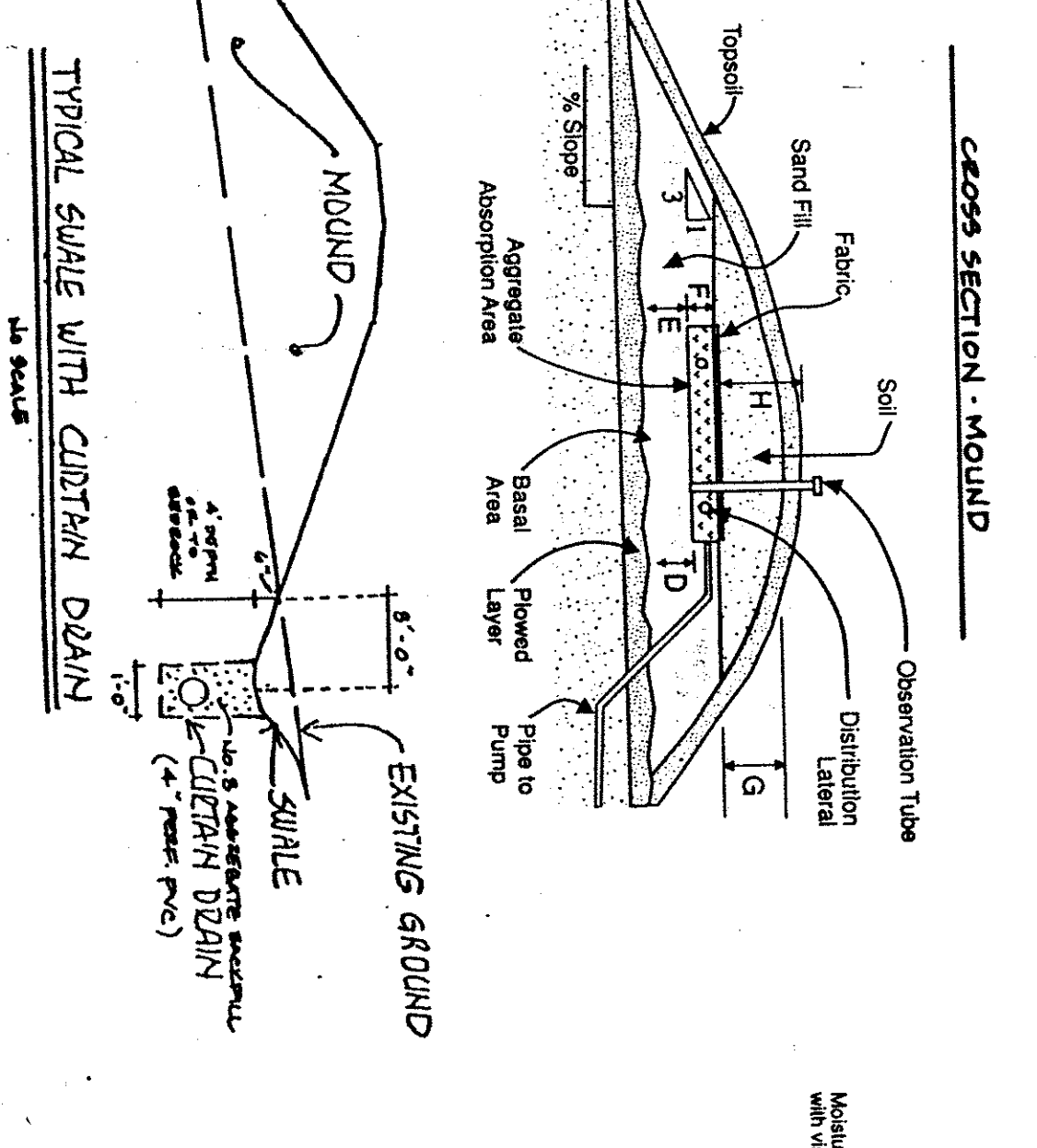
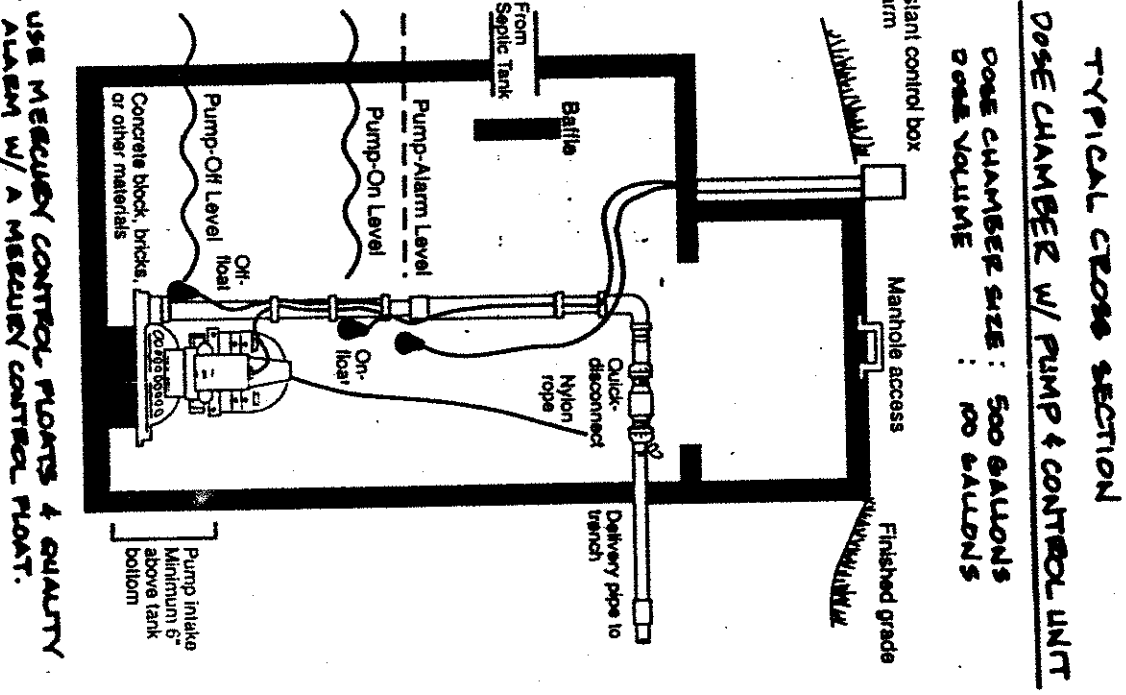
PLACE THE FILL MATERIAL TO THE REQUIRED DEPTH WHICH IS THE TOP OF THE TRENCHES. SHAPE SLOES TO THE DESIRED SLOPE.

WITH THE BLADE OF THE TRACTOR FROM THE TRENCHES HAND LEVEL, THE BOTTOM OF THE TRENCHES THE BOTTOMS SHALL BE AT THE SAME ELEVATION AND LEVEL.

PLACE THE COARSE AGGREGATE IN THE TRENCHES. AGGREGATE SHALL BE 1/2" N. NON-DETERIORATING AGGREGATE.

PLACE THE DISTRIBUTION SYSTEM ON THE AGGREGATE. CONNECT THE MANHOLE TO THE PIPE FROM THE PUMPING CHAMBER. SLOPE MAY FOLD TO EFFLUENT PIPE. LAY LATERALS LEVEL, REMOVING KICKS AND UPS.

PLACE 2 IN. OF AGGREGATE OVER THE DISTRIBUTION PIPES.



REV NO.	DESCRIPTION	DATE	BY	CHK'D

DATE: 9/19/97

DESIGN BY: HJ

DRAWN BY: M.S. & TR

APPROVED BY: HT

SCALE: 1" = 20'

SHEET: 1 OF 1

BABCOCK, JONES AND ASSOCIATES, INC.
CIVIL ENGINEERS - SURVEYORS - LAND PLANNERS
PAINESVILLE OHIO 44077

DAVE CARRE, INC.
164 - Hermitage Road
Lakes County Ohio 44077