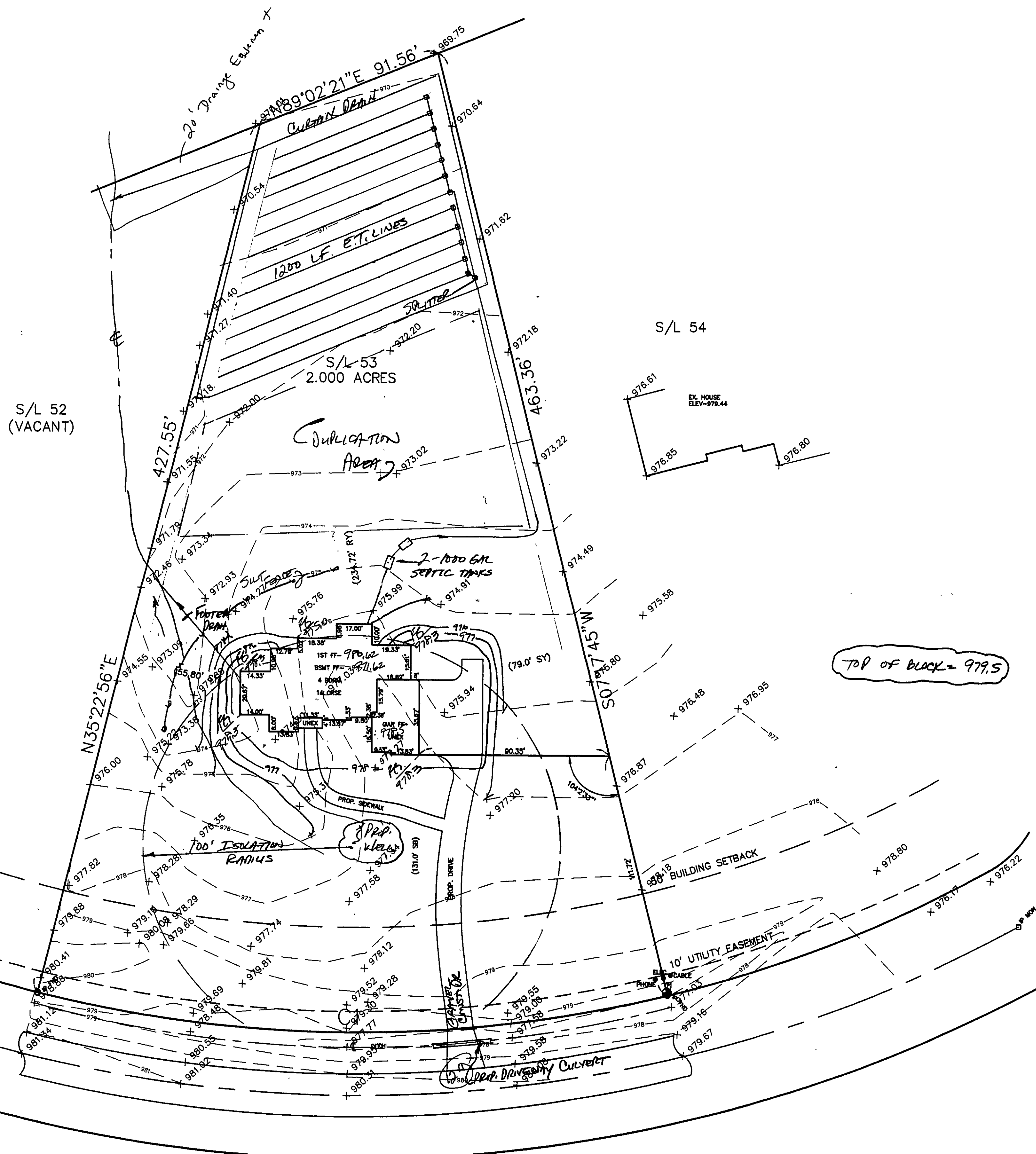


HYDRAULIC PROFILE
HORIZ: 1" = 30' VERT: 1" = 5'

Stormwater Management Plan
Approved as shown and/or noted
JAMES R. GILLS, P.E.
County Drainage Engineer
By 211 Date 10/22/03

ROOF DRAINS
SHALL DISCHARGE
TO SPLASH BLOCKS.



"I, the undersigned hereby certify that this topography indicated by 6", contours, and elevations shown represent an actual field survey made on the 20th day of Nov, and that the elevations were taken at appropriate intervals and that at a date they existed as indicated by

Name Henry Jones #6 R

CURVE	LENGTH	RADIUS	TANGENT	CHORD	BEARI
C1	303.92	620.00	155.08	300.89	N68°30'

EXISTING UTILITIES NOTE:
THE SIZE AND LOCATION, BOTH HORIZONTAL AND VERTICAL
OF THE UNDERGROUND UTILITIES SHOWN HEREON, HAVE BEEN
OBTAINED BY A SEARCH OF AVAILABLE RECORDS.
VERIFICATION BY FIELD OBSERVATION HAS BEEN CONDUCTED
WHERE PRACTICAL, HOWEVER, BABCOCK, JONES AND ASSOCIATES
INC. DOES NOT GUARANTEE THE COMPLETENESS NOR ACCURACY

BUCKINGHAM PLACE - 60'

DESCRIPTION		DATE	BY	CHK'D
USE ON LOT		9/18/03	N.S.	H.J.
USE		9/29/03	N.S.	H.J.

b7c

BABCOCK, JONES AND ASSOCIATES, INC.
CIVIL ENGINEERS - SURVEYORS - LAND PLANNERS
PAINESVILLE, OHIO 44077

DATE	12/05/02
DESIGN BY	HJ
DRAWN BY	NS
APPROVED BY	HJ

SITE PLAN FOR KERN

CONCORD TOWNSHIP LAKE COUNTY STATE OF OHIO