

EROSION CONTROL PLAN & SCHEDULE

SILT FENCE TO BE INSTALLED PRIOR TO ANY EARTHWORK ACTIVITY, IN LOCATION SHOWN ON PLANS, PER DETAIL.

STONE SHALL BE INSTALLED IN FUTURE DRIVEWAY AREA 20 FEET WIDE AND 50 FEET LONG TO PREVENT VEHICLES FROM TRACKING SEDIMENT OFF THIS SITE. INGRESS AND EGRESS TO BE LIMITED TO THIS AREA ONLY.

SEDIMENT CONTROL PRACTICES SHALL BE FUNCTIONAL THROUGHOUT ALL PHASES OF EARTH DISTURBING ACTIVITY. SETTLING FACILITIES, PERIMETER CONTROLS, AND OTHER PRACTICES INTENDED TO TRAP SEDIMENT SHALL BE IMPLEMENTED AS THE FIRST STEP OF GRADING AND WITHIN SEVEN (7) DAYS FROM THE START OF GRUBBING. THEY SHALL CONTINUE TO FUNCTION UNTIL THE DISTURBED AREA IS PERMANENTLY RESTABILIZED.

DISTURBED AREAS SHALL HAVE SOIL STABILIZATION WITHIN NO MORE THAN SEVEN (7) DAYS IF THEY ARE TO REMAIN DORMANT UNDISTURBED FOR MORE THAN THIRTY-FIVE (35) DAYS. PERMANENT OR TEMPORARY SOIL STABILIZATION SHALL BE APPLIED TO DISTURBED AREAS WITHIN NO MORE THAN SEVEN (7) DAYS AFTER FINAL GRADE IS REACHED ON ANY PORTION OF THE SITE, AND SHALL ALSO BE APPLIED WITHIN NO MORE THAN SEVEN (7) DAYS TO DISTURBED AREAS WHICH MAY NOT BE AT FINAL GRADE, BUT WILL REMAIN DORMANT FOR LONGER THAN THIRTY-FIVE (35) DAYS.

STABILIZATION OF CRITICAL AREAS WITHIN 50 FEET OF ANY STREAM OR WETLAND SHALL BE TEMPORARILY STABILIZED WITHIN TWO (2) DAYS OF DISTURBANCE IF AREA WILL REMAIN INACTIVE FOR FOURTEEN (14) DAYS OR LONGER. CONSTRUCTION VEHICLES SHALL AVOID STREAMS AND THEIR BUFFER AREAS. IF ANY ACTIVE DRAINAGE WAY MUST BE CROSSED BY CONSTRUCTION VEHICLES REPEATEDLY DURING CONSTRUCTION, AN APPROVED TEMPORARY STREAM CROSSING SHALL BE CONSTRUCTED.

SOIL STOCKPILES SHALL BE STABILIZED OR PROTECTED TO PREVENT SOIL LOSS. STABILIZATION SHALL BE REQUIRED IF STOCKPILES ARE LOCATED WITHIN CRITICAL AREAS NEAR STREAM OR WETLANDS, OR IF DETERMINED BY THE ADMINISTRATOR THAT SEDIMENT FROM STOCKPILES WILL LEAVE THE SITE.

SEDIMENT AND EROSION CONTROLS SHALL BE INSPECTED BY THE OWNER OR HIS/HER AGENT EVERY SEVEN (7) DAYS AND WITHIN 24 HOURS OF A 0.5" OR GREATER RAINFALL EVENT. A WRITTEN LOG OF THESE INSPECTIONS AND IMPROVEMENTS TO CONTROLS SHALL BE KEPT ON SITE. THESE INSPECTIONS SHALL INCLUDE THE DATE OF INSPECTION, NAME OF INSPECTOR, WEATHER CONDITIONS, THE ACTIONS TAKEN TO CORRECT ANY PROBLEMS AND THE DATE ACTIONS WERE TAKEN.

MEASURES SHALL BE TAKEN TO PREVENT SOIL TRANSPORT ONTO SURFACES WHERE RUNOFF IS NOT CHECKED BY SEDIMENT CONTROLS, OR ONTO PUBLIC ROADS. WHERE SOIL IS TRANSPORTED ONTO A PUBLIC ROAD SURFACE, THE ROADS SHALL BE CLEANED THOROUGHLY AT THE END OF EACH DAY, OR MORE FREQUENTLY AS NECESSARY. SOIL SHALL BE REMOVED FROM PAVED SURFACES BY SHOVELING OR SWEEPING. STREET WASHING SHALL BE ALLOWED ONLY AFTER MOST SEDIMENT HAS BEEN REMOVED BY SHOVELING OR SWEEPING.

THE ABOVE SPECIFIED EROSION CONTROL STANDARDS ARE GENERAL GUIDELINES AND SHALL NOT LIMIT THE RIGHT OF THE COUNTY TO IMPOSE, AT ANY TIME, ADDITIONAL, MORE STRINGENT REQUIREMENTS. NOR SHALL THE STANDARDS LIMIT THE RIGHT OF THE COUNTY TO WAIVE, IN WRITING, INDIVIDUAL REQUIREMENTS.

PERMANENT SEEDING TO BE INSTALLED AFTER ALL CONSTRUCTION ACTIVITY IS COMPLETE.

SEEDING AND MULCHING NOTES
SEEDING CONTROL SHALL BE ACCOMPLISHED BY SEEDING AND MULCHING IMMEDIATELY UPON COMPLETION OF EXCAVATION OF FILL AND FINISHED GRADING IN ACCORDANCE WITH ITEM NO. 659 ODOT CONSTRUCTION AND MATERIAL SPECIFICATIONS OR AS DIRECTED BY THE ENGINEER.

THE FOLLOWING MIXTURE SHALL BE USED FOR SEEDING IN ACCORDANCE WITH ODOT ITEM 659.

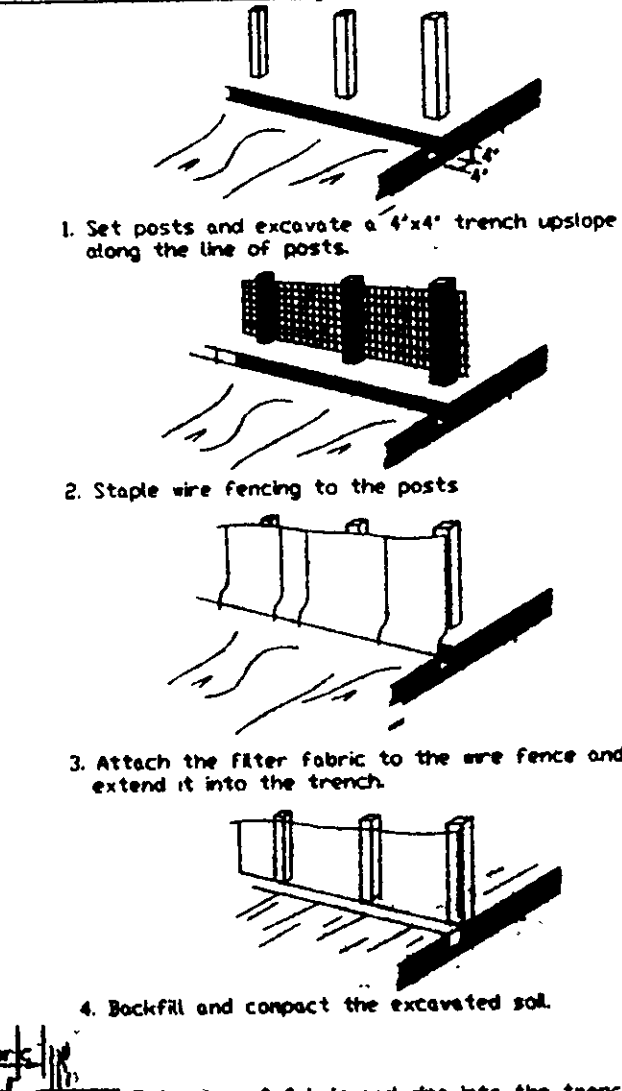
KENTUCKY BLUE GRASS- 40%
CREEPING RED FESCUE- 40% 3#/ 1000 S.F.
PERENNIAL RYEGRASS- 20%
FERTILIZER- 20#/ 1000 S.F. (12-12-12)
MULCH-STRAW/ 3 TONS/ ACRE

1. FENCE: This sediment barrier utilizes standard strength or extra strength synthetic filter fabrics (as designed for situations in which only sheet or overland flows are expected. See diagram).
2. The height of a silt fence shall not exceed 36 inches (higher fences may impound volumes of water sufficient to cause failure of the structure).
3. The filter fabric shall be purchased in a continuous roll cut to the length of the barrier to avoid the use of joint. When joints are necessary, filter cloth shall be spliced together only on a support post, with a minimum 6-inch overlap, and securely sealed.
4. Posts shall be spaced with a maximum of 10 feet apart at the barrier location and driven securely into the ground (minimum of 12 inches) when extra strength fabric is used.
5. Input the wire support fence. Post spacing shall not exceed 6 feet.
6. A trench shall be excavated approximately 4 inches wide and 4 inches deep along the line of posts and upslope from the barrier.
7. When standard strength filter fabric is used, a wire mesh support fence shall be fastened securely to the upslope side of the posts using heavy duty wire staples of at least 1 inch long, tie wires of hog rings. The wire shall extend into the trench a minimum of 2 inches and shall not extend more than 36 inches above the original ground surface.
8. The standard strength filter fabric shall be stapled or wired to the fence, and 8 inches of the fabric shall be extended into the trench. The fabric shall no exceed more than 36 inches above the original ground surface. Filter fabric shall not be stapled to the existing trees.
9. When extra strength filter fabric and closer post spacing are used, the wire mesh support fence may be eliminated. In such case, the filter fabric is stapled or wired directly to the posts with all other provisions of item No. 6 applying.
10. The trench shall be backfilled and soil compacted over the filter fabric.
11. Silt fences shall be removed when they have served their useful purpose, but not before the upslope area has been permanently stabilized.

MAINTENANCE

1. Silt fences and filter barriers shall be inspected immediately after each rainfall and at least daily during prolonged rainfall. Any required repairs shall be made immediately.
2. Should the fabric on a silt fence of filter barrier decompose or become ineffective prior to the end of the expected useful life and the barrier is still necessary, the fabric shall be replaced promptly.
3. Sediment deposits should be removed after each storm event. They must be removed when deposits reach approximately one-half the height of the barrier.
4. Any sediment deposits remaining in place after the silt fence or filter barrier is no longer required shall be dressed to conform with the existing grade, prepared and seeded.

SILT FENCE
NO SCALE

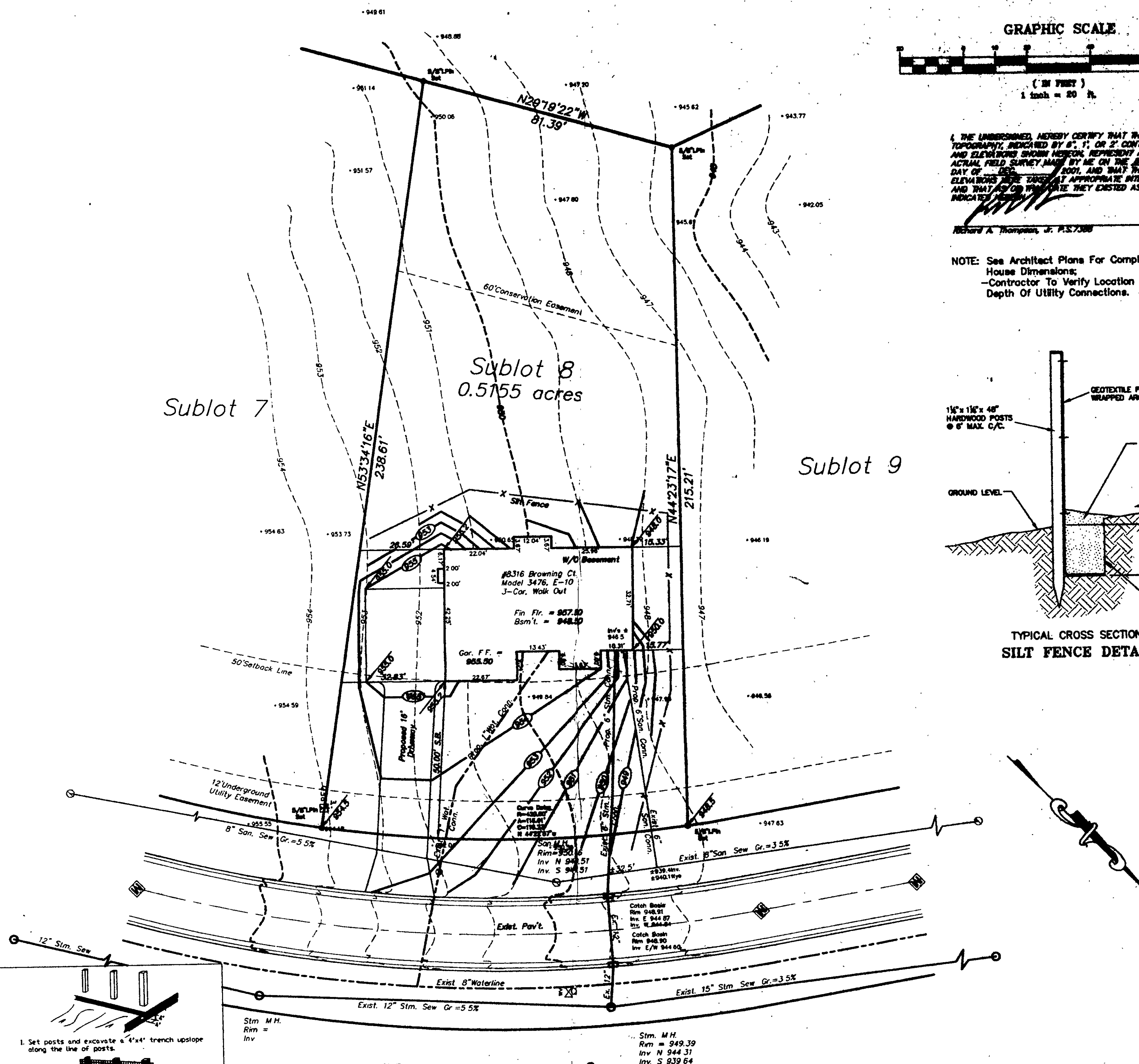


March 1, 1994

Sublot 7

Sublot 8
0.5155 acres

Sublot 9

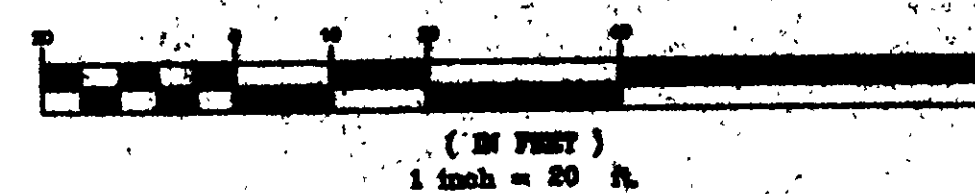


Browning Court 60'

2 WORKING DAYS
BEFORE YOU DIG
CALL TOLL FREE 800-362-2764
OHIO UTILITIES PROTECTION SERVICE

EXISTING UNDERGROUND UTILITIES NOTE:
THE SIZE & LOCATION, BOTH HORIZONTAL AND VERTICAL, OF THE UNDERGROUND UTILITIES SHOWN HEREON, HAVE BEEN OBTAINED BY A SEARCH OF AVAILABLE RECORDS. VERIFICATION BY FIELD OBSERVATION HAS BEEN CONDUCTED WHERE PRACTICAL. HOWEVER, LAC INC. DOES NOT GUARANTEE THE COMPLETENESS AND ACCURACY THEREOF.

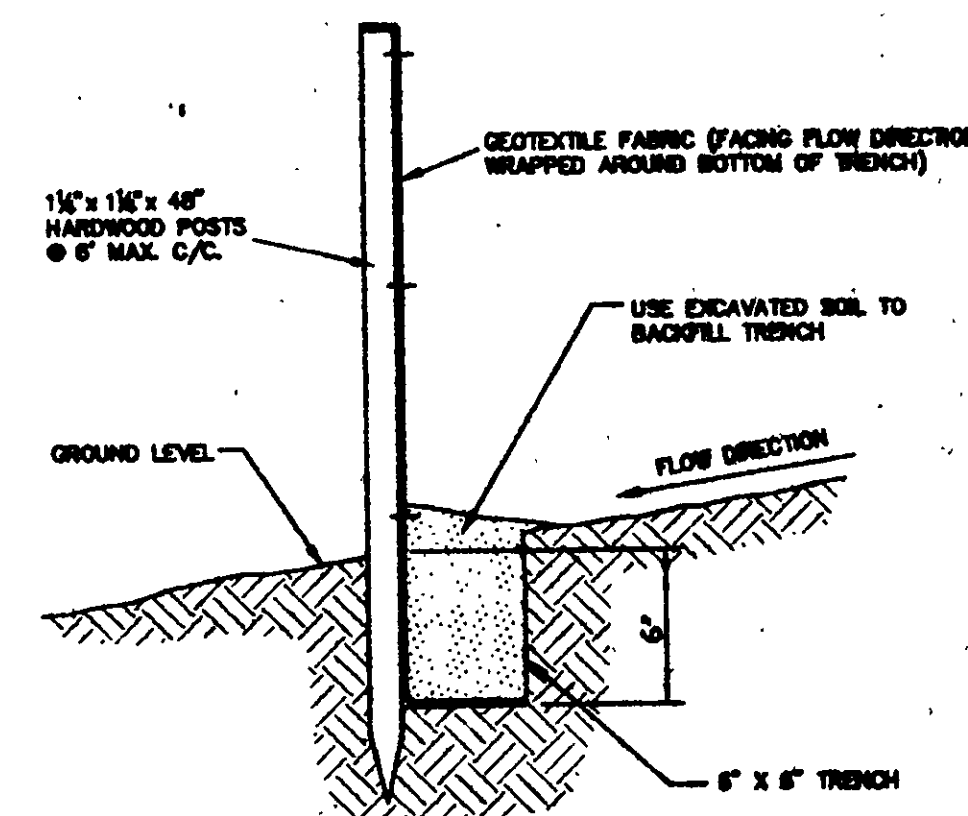
GRAPHIC SCALE



I, THE UNDERSIGNED, HEREBY CERTIFY THAT THIS TOPOGRAPHY, INDICATED BY 6.1, OR 2' CONTOURS AND ELEVATIONS SHOWN HEREON, REPRESENT AN ACTUAL FIELD SURVEY MADE BY ME ON THE 28th DAY OF FEBRUARY, 2001, AND THAT THE ELEVATIONS ARE BASED ON APPROPRIATE INTERVALS AND THAT AS OF THE DATE THEY EXISTED AS INDICATED.

Richard A. Thompson, Jr. P.S. 7388

NOTE: See Architect Plans For Complete House Dimensions.
Contractor To Verify Location And Depth Of Utility Connections.



TYPICAL CROSS SECTION
SILT FENCE DETAIL

SITE PLAN

For: **Putte Homes Of Ohio**

PROJECT NO. **1201-16425**
DATE **12-12-01**

LAC DESIGN CONSULTANTS
ENGINEERS PLANNERS SURVEYORS
1471 East Industrial Park Lane, Dayton, OH 45424
(937) 233-1234 FAX (937) 233-1235

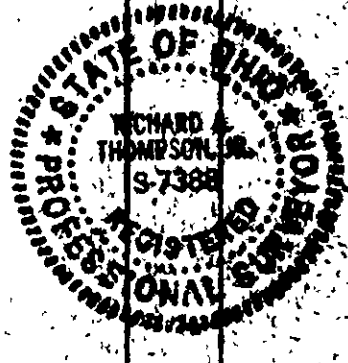
DESIGN CERTIFICATION

THIS PLAN WAS PREPARED BY LAC AND IS CORRECT TO THE BEST OF MY KNOWLEDGE AND BELIEF.

Richard A. Thompson, Jr.
NAME

CHECK LIST

ALL REQUIRED EROSION CONTROL MEASURES SHOWN ON THIS PLAN HAVE BEEN REVIEWED AND FOUND TO BE IN ACCORDANCE WITH THE REQUIREMENTS OF THE OHIO EROSION CONTROL ACT, CHAPTER 6043.01, AND THE OHIO EROSION CONTROL RULES, CHAPTER 6043.02.



"AS BUILT" CERTIFICATION

I HEREBY CERTIFY THAT THE CONSTRUCTION OF THIS PROJECT HAS BEEN COMPLETED IN ACCORDANCE WITH THE DESIGN SHOWN ON THIS PLAN AND IS CORRECT TO THE BEST OF MY KNOWLEDGE AND BELIEF.

Richard A. Thompson, Jr.
NAME

LEGEND	DATE	SCALE
1. Silt Fence	RAT	1" = 20'-0"
2. Silt Fence	RAT	12/10/01
3. Silt Fence	RAT	12/10/01

CONC. SEW. 12" DIA. 12' DEEP. 12' DIA. 12' DEEP.

EXIST. 8" SAN. SEW. GR. = 3.5%

EXIST. 12" STIM. SEW. GR. = 5.5%

EXIST. 15" STIM. SEW. GR. = 3.5%

EXIST. 8" WATERLINE

EXIST. 12" STIM. SEW. GR. = 5.5%

EXIST. 15" STIM. SEW. GR. = 3.5%

EXIST. 8" WATERLINE

EXIST. 12" STIM. SEW. GR. = 5.5%

EXIST. 15" STIM. SEW. GR. = 3.5%

EXIST. 8" WATERLINE

EXIST. 12" STIM. SEW. GR. = 5.5%

EXIST. 15" STIM. SEW. GR. = 3.5%

EXIST. 8" WATERLINE

EXIST. 12" STIM. SEW. GR. = 5.5%

EXIST. 15" STIM. SEW. GR. = 3.5%

EXIST. 8" WATERLINE

EXIST. 12" STIM. SEW. GR. = 5.5%

EXIST. 15" STIM. SEW. GR. = 3.5%

EXIST. 8" WATERLINE

EXIST. 12" STIM. SEW. GR. = 5.5%

EXIST. 15" STIM. SEW. GR. = 3.5%

EXIST. 8" WATERLINE

EXIST. 12" STIM. SEW. GR. = 5.5%

EXIST. 15" STIM. SEW. GR. = 3.5%

EXIST. 8" WATERLINE

EXIST. 12" STIM. SEW. GR. = 5.5%

EXIST. 15" STIM. SEW. GR. = 3.5%

EXIST. 8" WATERLINE

EXIST. 12" STIM. SEW. GR. = 5.5%

EXIST. 15" STIM. SEW. GR. = 3.5%

EXIST. 8" WATERLINE

EXIST. 12" STIM. SEW. GR. = 5.5%

EXIST. 15" STIM. SEW. GR. = 3.5%

EXIST. 8" WATERLINE

EXIST. 12" STIM. SEW. GR. = 5.5%

EXIST. 15" STIM. SEW. GR. = 3.5%

EXIST. 8" WATERLINE

EXIST. 12" STIM. SEW. GR. = 5.5%

EXIST. 15" STIM. SEW. GR. = 3.5%

EXIST. 8" WATERLINE

EXIST. 12" STIM. SEW. GR. = 5.5%

EXIST. 15" STIM. SEW. GR. = 3.5%

EXIST. 8" WATERLINE

EXIST. 12" STIM. SEW. GR. = 5.5%

EXIST. 15" STIM. SEW. GR. = 3.5%

EXIST. 8" WATERLINE

EXIST. 12" STIM. SEW. GR. = 5.5%

EXIST. 15" STIM. SEW. GR. = 3.5%

EXIST. 8" WATERLINE

EXIST. 12" STIM. SEW. GR. = 5.5%

EXIST. 15" STIM. SEW. GR. = 3.5%

EXIST. 8" WATERLINE

EXIST. 12" STIM. SEW. GR. = 5.5%

EXIST. 15" STIM. SEW. GR. = 3.5%

EXIST. 8" WATERLINE

EXIST. 12" STIM. SEW. GR. = 5.5%

EXIST. 15" STIM. SEW. GR. = 3.5%

EXIST. 8" WATERLINE

EXIST. 12" STIM. SEW. GR. = 5.5%

EXIST. 15" STIM. SEW. GR. = 3.5%

EXIST. 8" WATERLINE

EXIST. 12" STIM. SEW. GR. = 5.5%

EXIST. 15" STIM. SEW. GR. = 3.5%

EXIST. 8" WATERLINE

EXIST. 12" STIM. SEW. GR. = 5.5%

EXIST. 15" STIM. SEW. GR. = 3.5%

EXIST. 8" WATERLINE

EXIST. 12" STIM. SEW. GR. = 5.5%

EXIST. 15" STIM. SEW. GR. = 3.5%

EXIST. 8" WATERLINE

EXIST. 12" STIM. SEW. GR. = 5.5%

EXIST. 15" STIM. SEW. GR. = 3.5%

EXIST. 8" WATERLINE

EXIST. 12" STIM. SEW. GR. = 5.5%

EXIST. 15" STIM. SEW. GR. = 3.5%

EXIST. 8" WATERLINE

EXIST. 12" STIM. SEW. GR. = 5.5%

EXIST. 15" STIM. SEW. GR. = 3.5%

EXIST. 8" WATERLINE

EXIST. 12" STIM. SEW. GR. = 5.5%

EXIST. 15" STIM. SEW. GR. = 3.5%

EXIST. 8" WATERLINE

EXIST. 12" STIM. SEW. GR. = 5.5%

EXIST. 15" STIM. SEW. GR. = 3.5%

EXIST. 8" WATERLINE

EXIST. 12" STIM. SEW. GR. = 5.5%

EXIST. 15" STIM. SEW. GR. = 3.5%

EXIST. 8" WATERLINE

EXIST. 12" STIM. SEW. GR. = 5.5%

EXIST. 15" STIM. SEW. GR. = 3.5%

EXIST. 8" WATERLINE

EXIST. 12" STIM. SEW. GR. = 5.5%

EXIST. 15" STIM. SEW. GR. = 3.5%

EXIST. 8" WATERLINE

EXIST. 12" STIM. SEW. GR. = 5.5%

EXIST. 15" STIM. SEW. GR. = 3.5%

EXIST. 8" WATERLINE

EXIST. 12" STIM. SEW. GR. = 5.5%

EXIST. 15" STIM. SEW. GR. = 3.5%

EXIST. 8" WATERLINE

EXIST. 12" STIM. SEW. GR. = 5.5%

EXIST. 15" STIM. SEW. GR. = 3.5%

EXIST. 8" WATERLINE

EXIST. 12" STIM. SEW. GR. = 5.5%

EXIST. 15" STIM. SEW. GR. = 3.5%

EXIST. 8" WATERLINE

EXIST. 12" STIM. SEW. GR. = 5.5%

EXIST. 15" STIM. SEW. GR. = 3.5%

EXIST. 8" WATERLINE

EXIST. 12" STIM. SEW. GR. = 5.5%

EXIST. 15" STIM. SEW. GR. = 3.5%

EXIST. 8" WATERLINE

EXIST. 12" STIM. SEW. GR. = 5.5%

EXIST. 15" STIM. SEW. GR. = 3.5%

EXIST. 8" WATERLINE

EXIST. 12" STIM. SEW. GR. = 5.5%

EXIST. 15" STIM. SEW. GR. = 3.5%

EXIST. 8" WATERLINE

EXIST. 12" STIM. SEW. GR. = 5.5%

EXIST. 15" STIM. SEW. GR. = 3.5%

EXIST. 8" WATERLINE

EXIST. 12" STIM. SEW. GR. = 5.5%

EXIST. 15" STIM. SEW. GR. = 3.5%

EXIST. 8" WATERLINE

EXIST. 12" STIM. SEW. GR. = 5.5%

EXIST. 15" STIM. SEW. GR. = 3.5%

EXIST. 8" WATERLINE

EXIST. 12" STIM. SEW. GR. = 5.5%

EXIST. 15" STIM. SEW. GR. = 3.5%

EXIST. 8" WATERLINE

EXIST. 12" STIM. SEW. GR. = 5.5%

EXIST. 15" STIM. SEW. GR. = 3.5%

EXIST. 8" WATERLINE

EXIST. 12" STIM. SEW. GR. = 5.5%

EXIST. 15" STIM. SEW. GR. = 3.5%

EXIST. 8" WATERLINE

EXIST. 12" STIM. SEW. GR. = 5.5%

EXIST. 15" STIM. SEW. GR. = 3.5%

EXIST. 8" WATERLINE

EXIST. 12" STIM. SEW. GR. = 5.5%

EXIST. 15" STIM. SEW. GR. = 3.5%

EXIST. 8" WATERLINE