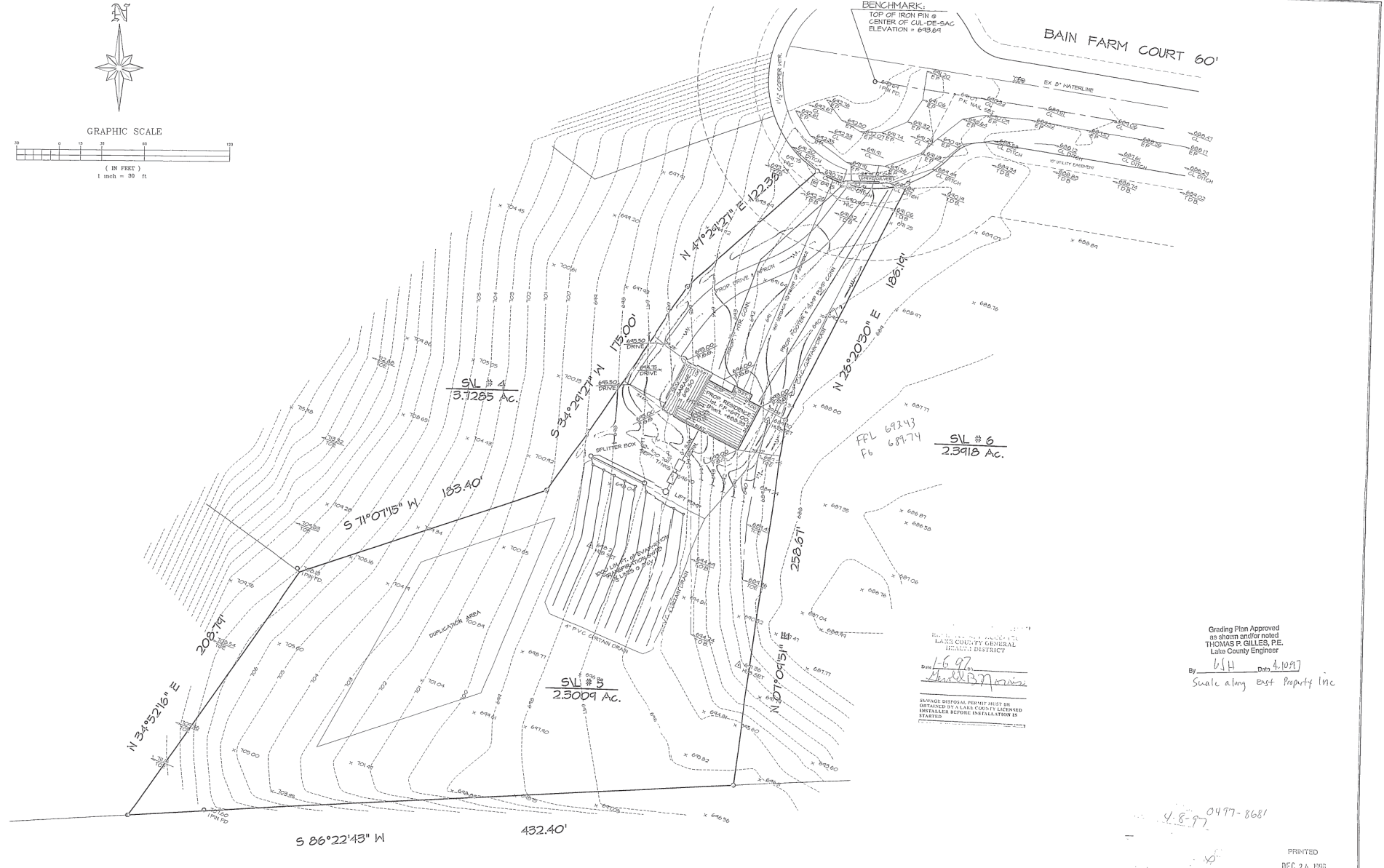


BENCHMARK:
TOP OF IRON PIN @
CENTER OF CUL-DE-SAC
ELEVATION = 649.64'

BAIN FARM COURT 60'



RECEIVED AND APPROVED BY
LAKE COUNTY GENERAL
HEALTH DISTRICT

Date: 6-97
[Signature]

SEWAGE DISPOSAL PERMIT MUST BE
OBTAINED BY A LAKE COUNTY LICENSED
INSTALLER BEFORE INSTALLATION IS
STARTED

Grading Plan Approved
as shown and/or noted
THOMAS P. GILLES, P.E.
Lake County Engineer

By: [Signature] Date: 4.10.97
Swale along East Papery Inc.

4-8-97 0477-8681

PRINTED
DEC 24 1996
L.A.C.E.D.



Rev. No.	Description	Date	By	CHK'D
1	REVISED PER LAKE COUNTY HEALTH DEPT. ADDED 2-1000 GAL SEPTIC TANKS	2/24/96	D. Abbott	

SITE PLAN for
SIGNATURE HOMES Inc.
BAIN FARM SUBDIVISION, CONCORD

Drawn By: D. Abbott
Filename: 46-32146-32
Checked By:
Approved By:
Date: NOV. 25, 1996

SUBLOT # 5

Scale:

Horizontal	1" = 30'
Vertical	1" = 30'
Sheet No.	Of
1	2