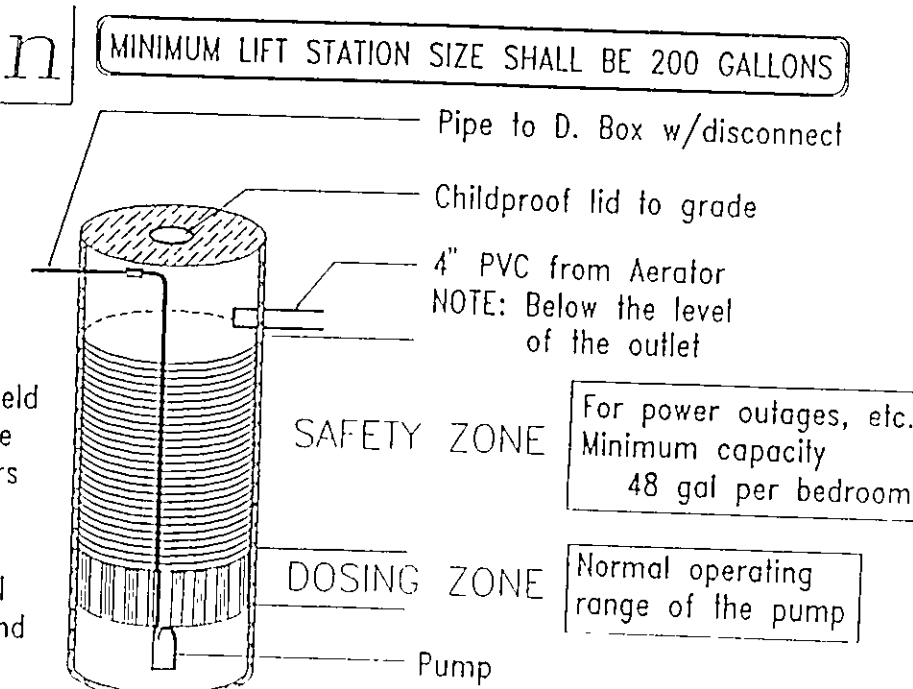


Electrical wiring for the lift station will be in conformance with local, state and national electric codes.

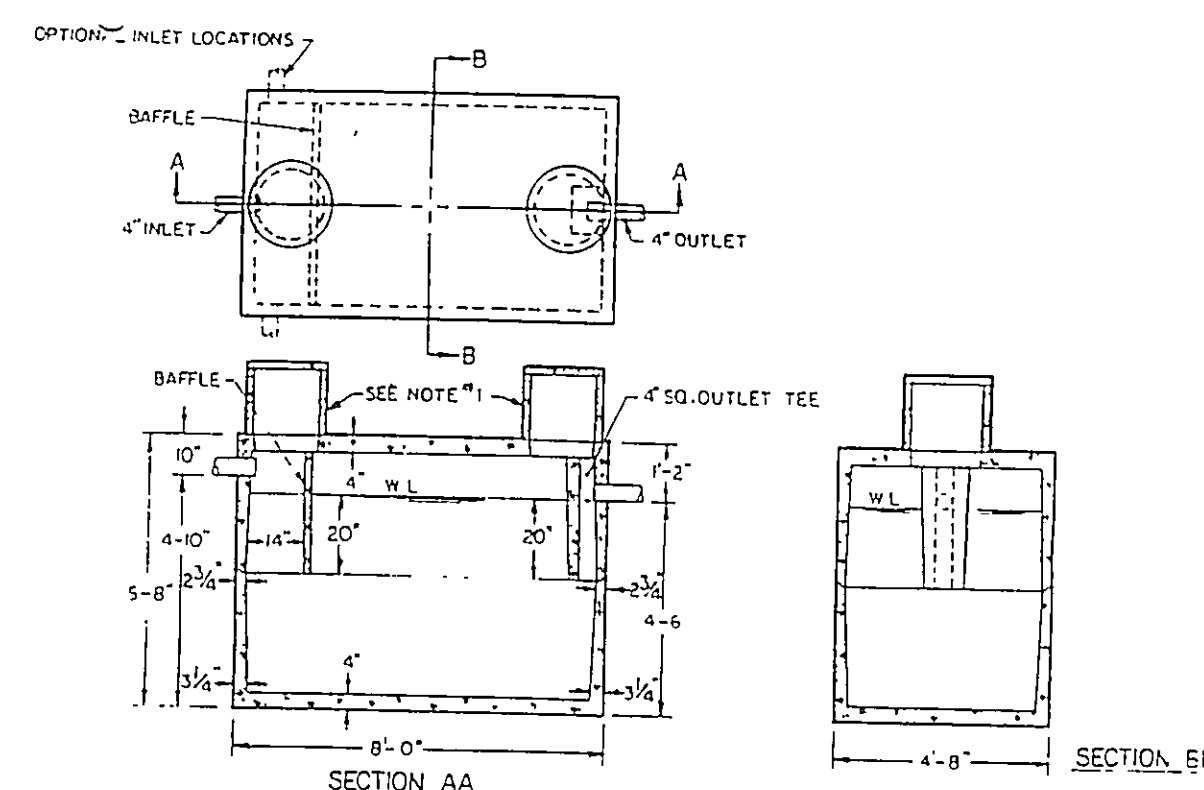


The diagram illustrates the construction of a curtain drain. The main cross-section shows a wall with a curtain drain pipe (4" perforated PVC) installed 6 inches below the bottom of the ET trench. The wall is filled with 3/4 to 1 1/2 inch washed gravel. The top of the wall is covered with top soil, which is at least 8 feet thick. A plan view of the ET trench shows a circular drain pipe at the center.

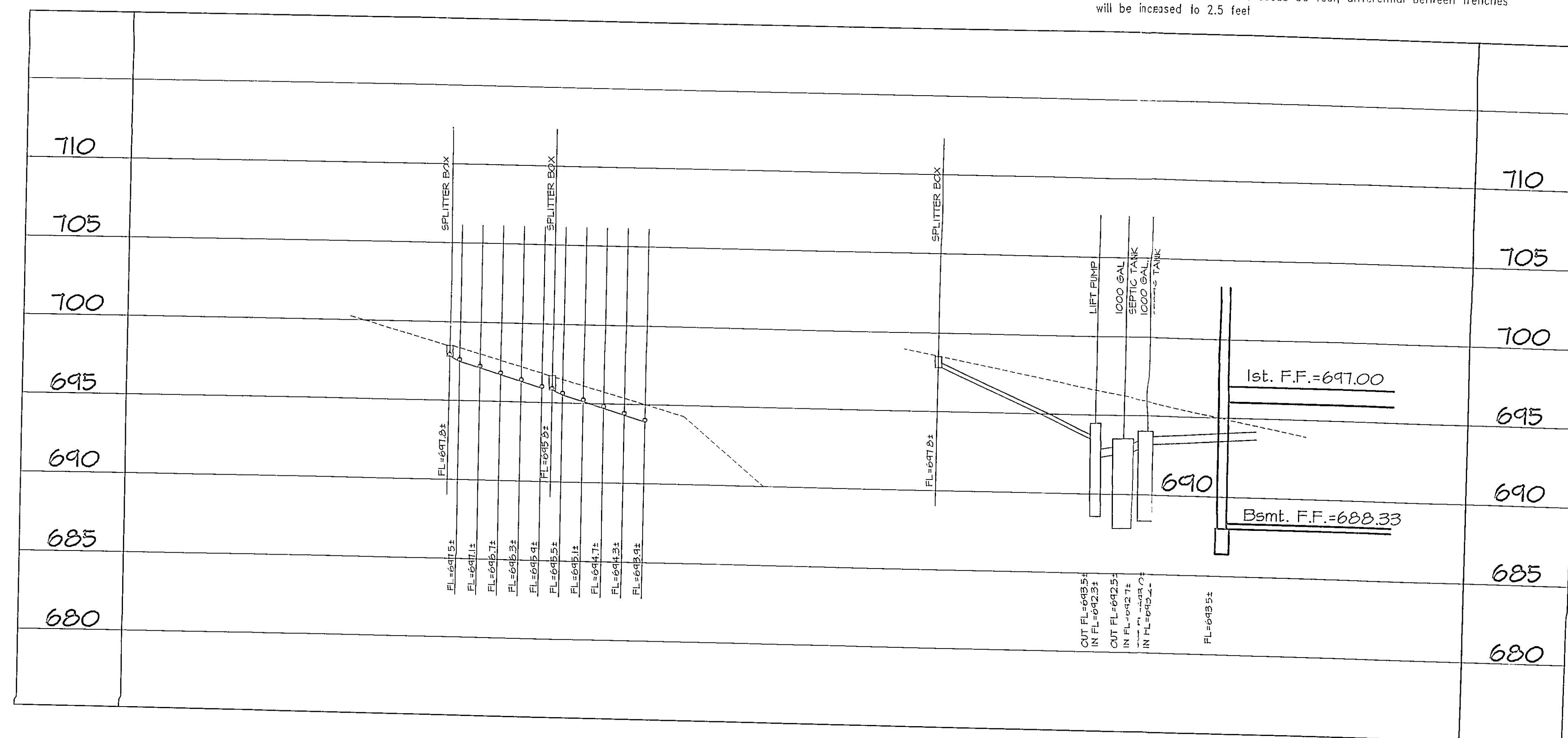
Labels in the diagram include:

- TOP SOIL
- ET TRENCH
- 8ft minimum
- 3/4 to 1 1/2 inch washed gravel
- 4" perforated PVC
- 6 inches below the bottom of the ET trench
- CURTAIN DRAIN

- Minimum width of trench for curtain drain to be 12 inches
- Minimum slope of curtain drain will be 6 inches in 10 foot
- The curtain drain will have an inspection port at the collection point of all four sides
- The outlet of the curtain drain will be protected from the entrance of small animals
- This design is for fields with a maximum width of 56 feet including curtain drains. When width exceeds 56 feet, differential between trenches will be increased to 2.5 feet



## TYPICAL SEPTIC TANK



EVAPORATION-TRANSPIRATION TRENCHES SHALL BE COVERED WITH TOPSOIL AND SEED. SHRUBBERY SHALL BE PLANTED IN THE AREA OF THE FIELD IN A FASHION TO BEST ASSIST IN TRANSPIRATION.

WILLIAM D LANDEG PS. # 4594

"I, THE UNDERSIGNED HEREBY CERTIFY THAT THIS TOPOGRAPHY SHOWN HEREON INDICATED BY 1'-0" CONTOURS AND ELEVATIONS REPRESENTS AN ACTUAL FIELD TOPOGRAPHICAL SURVEY MADE BY ME ON THE 28th. DAY OF FEBRUARY, 1966 AND THAT THE ELEVATIONS WERE TAKEN AT APPROPRIATE INTERVALS AND THAT AS OF THAT DATE THEY EXISTED AS INDICATED HEREON."

WILLIAM D LANDEG PS # 4594

12/24/90  
DATE


12/29/96  
DATE



ZONING PERMIT 04977-8681  
ISSUED 4-8-97

SUBJECT TO APPROVAL BY:  
Lake County Sanitary Eng. ☐  
Lake County Bldg. Dept. ☒  
Lake County Planning Comm. ☐  
Lake County Bldg. Dept. ☒

PRINTED  
DEC 24 1996  
L.A.C. 1152



**Lake, Inc.**  
ENGINEERS & SURVEYORS  
30601 EUCLID AVENUE WICKLIFFE, OHIO 44092  
PHONE: (216) 585-2100 FAX: (216) 585-5122

[illegible]

SITE PLAN for  
SIGNATURE HOMES Inc.  
BAIN FARM SUBDIVISION, CONCORD

Drawn By	D.Abbott
Filename:	96-32\96-32
Checked By	
Approved By:	
Date:	NOV. 25.1996

*SUBLOT # 5*

Scale:	
Horiz. 1" = 30'	
Vert 1" = 30'	
Sheet No.	Of
2	2