

CHRISMAN J. & JOANNE MUIR
No. 2004R058241
7A-16A-1

PAINESVILLE WARREN ROAD (S.R. 86) - 60'

NOTE: ALL IRON PINS SET ARE
5/8" X 30" AND ARE CAPPED
BABCOCK, JONES & ASSOC.

ORIGINAL - 3.6189 Ac.
SPLIT "A" - 0.8804 Ac.
TOTAL - 4.4993 Ac.
R/W - 0.2772 Ac.
NET - 4.2221 Ac.

DANIEL J. &
KAELYNNE R. LENK
VOL. 697 - PG. 1231
7A-16A-33

LAVONNE E. GOLDFUSS
No. 2003R000606
7A-16A-32

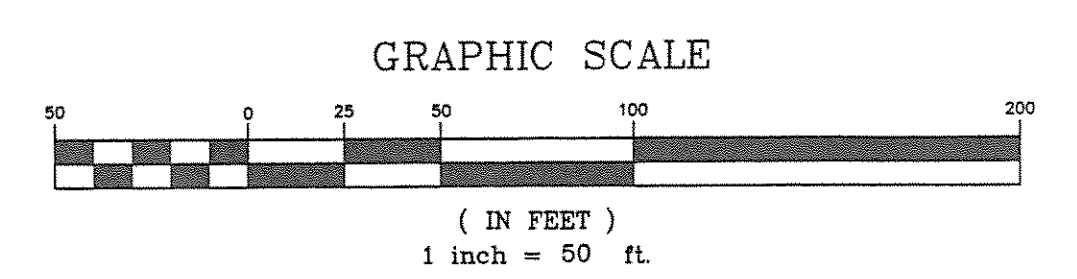
SPLIT "A"
0.8804 Ac.
RW 0.0723 Ac.
NET 0.8081 Ac.

SPLIT "B" - 2.3187 Ac.
R/W - 0.2492 Ac.
NET - 2.0695 Ac.

WILLIAM OSTRANDER
No. 200108176
7A-16A-2

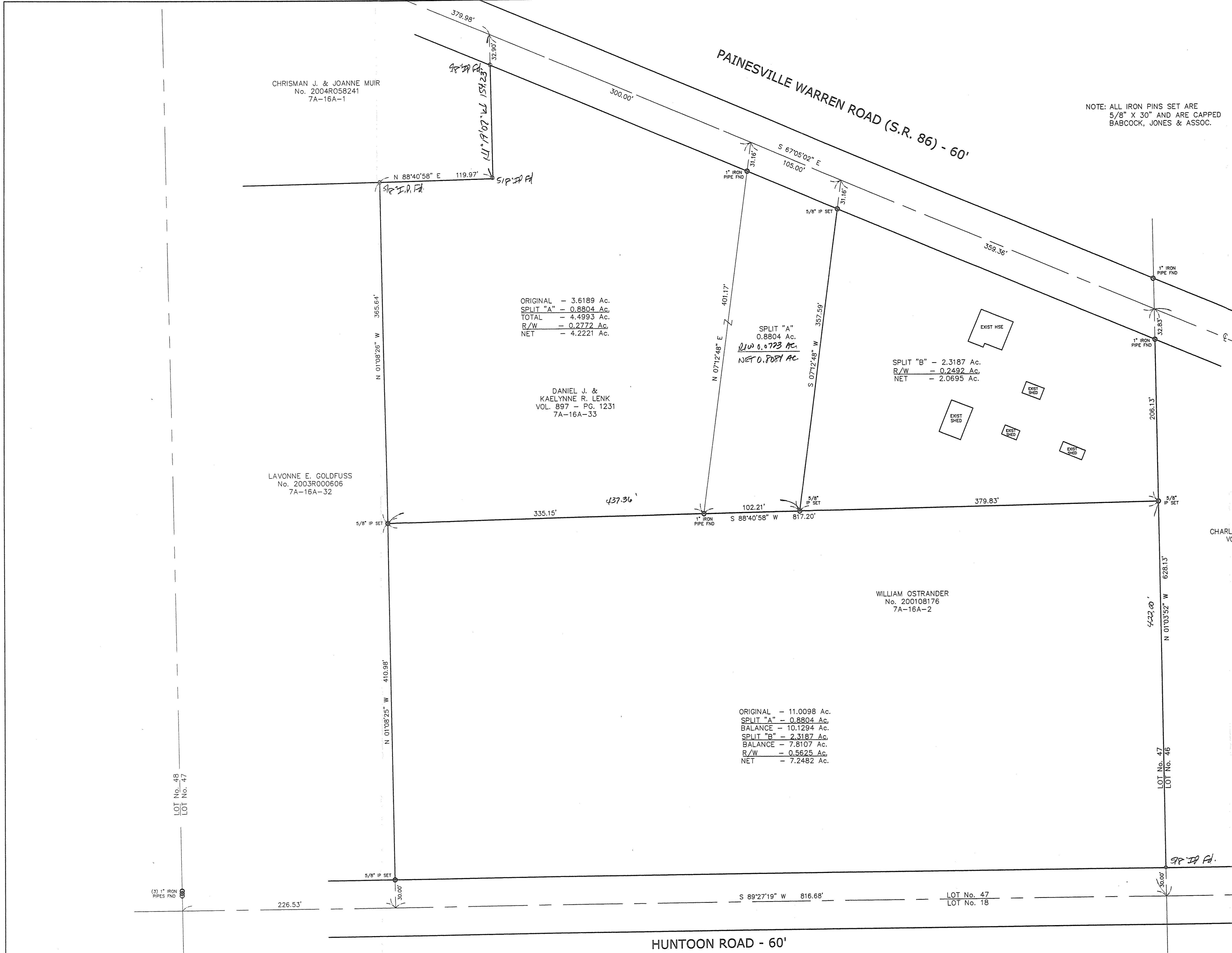
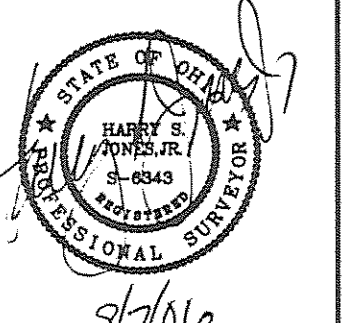
ORIGINAL - 11.0098 Ac.
SPLIT "A" - 0.8804 Ac.
BALANCE - 10.1294 Ac.
SPLIT "B" - 2.3187 Ac.
BALANCE - 7.8107 Ac.
R/W - 0.5625 Ac.
NET - 7.2482 Ac.

CHARLES J. & INEZ C. LEBER
VOL. 710 - PG. 297
7A-16A-3



Bearings are based upon the centerline of Painesville-Warren Road being South 67°05'02" East and are used to describe angles only.

EXISTING UTILITIES NOTE:
THE SIZE AND LOCATION, BOTH HORIZONTAL AND VERTICAL
OF THE UNDERGROUND UTILITIES SHOWN HEREON, HAVE BEEN
OBTAINED BY A SEARCH OF AVAILABLE RECORDS.
VERIFICATION BY FIELD OBSERVATION HAS BEEN CONDUCTED
WHERE PRACTICAL, HOWEVER, BABCOCK, JONES AND ASSOCIATES
INC. DOES NOT GUARANTEE THE COMPLETENESS NOR ACCURACY
THEREOF.



REV. NO.	DESCRIPTION	DATE	BY	CHK'D

bj BABCOCK, JONES AND ASSOCIATES, INC
CIVIL ENGINEERS - SURVEYORS - LAND PLANNERS
PAINESVILLE OHIO 44077

DATE 9/6/06
DESIGN BY H.J.
DRAWN BY B.P.
APPROVED BY H.J.
CREW CHIEF W.B.

PLAT OF SURVEY
FOR
KAY LENK
PAINESVILLE WARREN ROAD (P.P.# 7A-16A-33)
LEROY TOWNSHIP LAKE COUNTY STATE OF OHIO

SCALE 1"=50'
JOB NO 06-177
SHEET 1 OF 1