

ENGINEERS AND SURVEYORS

J. MITCHELL CRABBS, C. E.

311 Main St.

PAINESVILLE, OHIO

LAND SURVEYING, LAND DRAINAGE, SEWERS

AND PAVEMENTS STRUCTURAL DE-

SIGNING, ARCHITECTURE

OFFICE PHONE 555-L

RESIDENCE PHONE 586-L

Cummings & Downer

ENGINEERS AND ARCHITECTS

PAINESVILLE, OHIO

SEWERAGE, ROAD BUILDING, WATERWORKS

DISTRIBUTION, PARK, CEMETERY, AND

PRIVATE ESTATE WORK, INCL-

UDING PLANTING AND LAND-

SCAPE PLANS

ARCHITECTURAL AND STRUCTURAL WORK OF ALL KINDS

H. P. Cummings, senior member of the partnership was born and raised in Madison township, Lake County.

He graduated from the civil engineering department of Union College, at Schenectady, New York, in the class of 1888, and has been engaged in engineering work since that date. Besides having carried on a large private business he has served for six years as City Engineer of Painesville, Ohio, and is now County Engineer and Highway Superintendent for Lake County.

F. N. Downer, junior member of the partnership was born at Cleveland, Ohio, and spent his early life in Cleveland, Ohio, Auburn, N. Y.; Cincinnati, Ohio, and Painesville, Ohio. He entered the employ of Mr. Cummings January 5, 1903, and on January 1, 1905 the partnership of Cummings and Downer was formed. In addition to a large private business in general engineering and architecture Mr. Downer served for six years as Assistant City Engineer and now holds the position of City Engineer of Painesville, Ohio.

Home Phone Main 294

J. C. WARD

ENGINEERING, SURVEYING AND CONVEYANCING

115 E. Washington Street

OVER FORTY YEARS' EXPERIENCE IN LAKE COUNTY

Maker of County Tax Maps of 1910

PAINESVILLE, O.

MANUFACTURING AND INDUSTRIAL

F. J. MIGHTON, Pres. O. L. BARNES, Vice Pres. Home, No. 43
C. J. SCOTT, Secy. W. T. COWLS, Treas. Bell, No. 101 R

The Painesville Elevator Co.

(Members of the Ohio Feed Dealers Association)

MERCHANT and
CUSTOM GRINDING

PAINESVILLE OHIO

GRAIN, FLOUR, SALT, FEED, SEEDS, HAY and
STRAW, POULTRY SUPPLIES, ETC.
WHOLESALE and RETAIL.

Elevator and Warehouses on Nickel Plate Railroad.

PAINESVILLE NURSERIES

The Storrs & Harrison Company

PAINESVILLE, OHIO

This departmental nursery growing the largest assortment of trees, small fruits, grape vines, shrubs, roses, tender and hardy plants, seeds, etc., has been for the past sixty years one of the most potent influences in putting Painesville on the map, and making Lake County horticultural products known in every State in the Union.

Their location on the bank of Lake Erie furnishes several distinct varieties of soil, enabling them to give the different products the location best adapted to their particular needs, while the climatic conditions of air drainage, freedom from early fall and late spring frosts have proven particularly adapted to successful propagation and the quick healthy growth of stock. Their fine building, seed warehouse, packing houses, storage cellars, greenhouses, etc., cover acres of ground. A switch from the New York Central Railroad giving them the best of facilities for prompt shipment.

They utilize about fourteen hundred acres for field grown nursery stock, sixty acres being devoted to roses alone, a large acreage to hardy plants, including old-fashioned flowers that made our grandmother's gardens objects of beauty and that are again making their special appeal to all lovers of hardy plants and growers.

For every fall and spring planting season the firm issues catalogues and price lists, finely illustrated with photo engravings, containing descriptions of their products, hints on planting, growing, etc. On request these are mailed free to intending purchasers.

THE E. D. RICH & SON CO.

MAUSOLEUMS

MONUMENTS

MARKERS



PARTIAL VIEW OF OUR PAINESVILLE PLANT.

HIGH GRADE MATERIAL

FIRST-CLASS WORK

All Carving and Lettering Done with Pneumatic Hammers

206 South Street
PAINESVILLE, O.

6814-16 Woodland Avenue
CLEVELAND, O.

(Successors to MORLEY & WARREN)

—ESTABLISHED TWENTY-FIVE YEARS—

W. B. COLE
Avenue Nurseries

PAINESVILLE, O.

These nurseries were established about 1870, and came under the control of the present owner in 1881. Our acreage has increased from 15 acres in 1881 to 400 acres in 1916, and the stock from a few easily grown sorts to hundreds of varieties of fruit trees, plants and ornamental deciduous and evergreen trees, shrubs, roses and perennials.

Favorable climatic and soil conditions and proximity to prosperous farm and fruit sections and enterprising manufacturing towns and cities are the main factors in the growth of our business.

Our aim has been to keep pace with the demand in quality and varieties of stock wanted and to get our products in the hands of the planter in the best possible condition and at the lowest possible cost, consistent with proper culture and handling.

GEORGE W. COLGROVE

Livery and Feed Stable

MANUFACTURER AND DEALER IN CARRIAGES & WAGONS

Painting and Repairing .. Auto Livery

Rubber tires are a specialty. Mr. Colgrove has been engaged in this business for about 32 years; the livery business having been added and formed a part of his business during the last ten years. He was born and reared in the City of Painesville, Ohio. He is not only active as a business man, but also in matters pertaining to the interest of his city.

SHOP PHONE 235

RESIDENCE PHONE 234

T. W. MORGAN

Painesville

Ohio

Horse Shoeing and General Repairing

WAGONS REBUILT .. TIRES SET—HOT OR COLD

PRICES ALWAYS RIGHT

CHIEF OF THE FIRE DEPARTMENT

COMMERCIAL

GEO. P. STEELE, President GEO. R. MOODEY, Manager HARRY R. COLLACOTT, Secretary.

Painesville Gas Light and Coal Company

PAINESVILLE, OHIO

**Look With Gas
Cook With Gas**

THE CORNER PHARMACY

IS OWNED AND OPERATED BY

J. G. DAVET

AND WAS ESTABLISHED IN 1903

This is an up-to-date Drug Store made popular by the efficiency of its proprietor, who handles a stock complete in all details, and which meets the requirements of his patrons.

CHAS. E. DOOLITTLE, Pres. H. MARSHALL DOOLITTLE, Treas.
ROBT. E. DOOLITTLE, V.-Pres. RALPH S. BELKNAP, Secretary

THE DOOLITTLE BROS. CO.

General Hardware

HOUSE FURNISHING SUPPLIES, MIXED PAINTS, OILS, ETC.

AGENTS FOR

Oliver Plows, Coldwell's Lawn Mowers

PAINESVILLE, OHIO

Painesville Coal and Supply Co.

P. W. BENSKIN, Proprietor

COAL, CEMENT, LIME, SEWER PIPE, TILE, ETC.

COAL YARD OFFICE AND WAREHOUSE

State Street and L. S. & M. S. R. R.

HOME PHONE 108

RESIDENCE PHONE 203 J

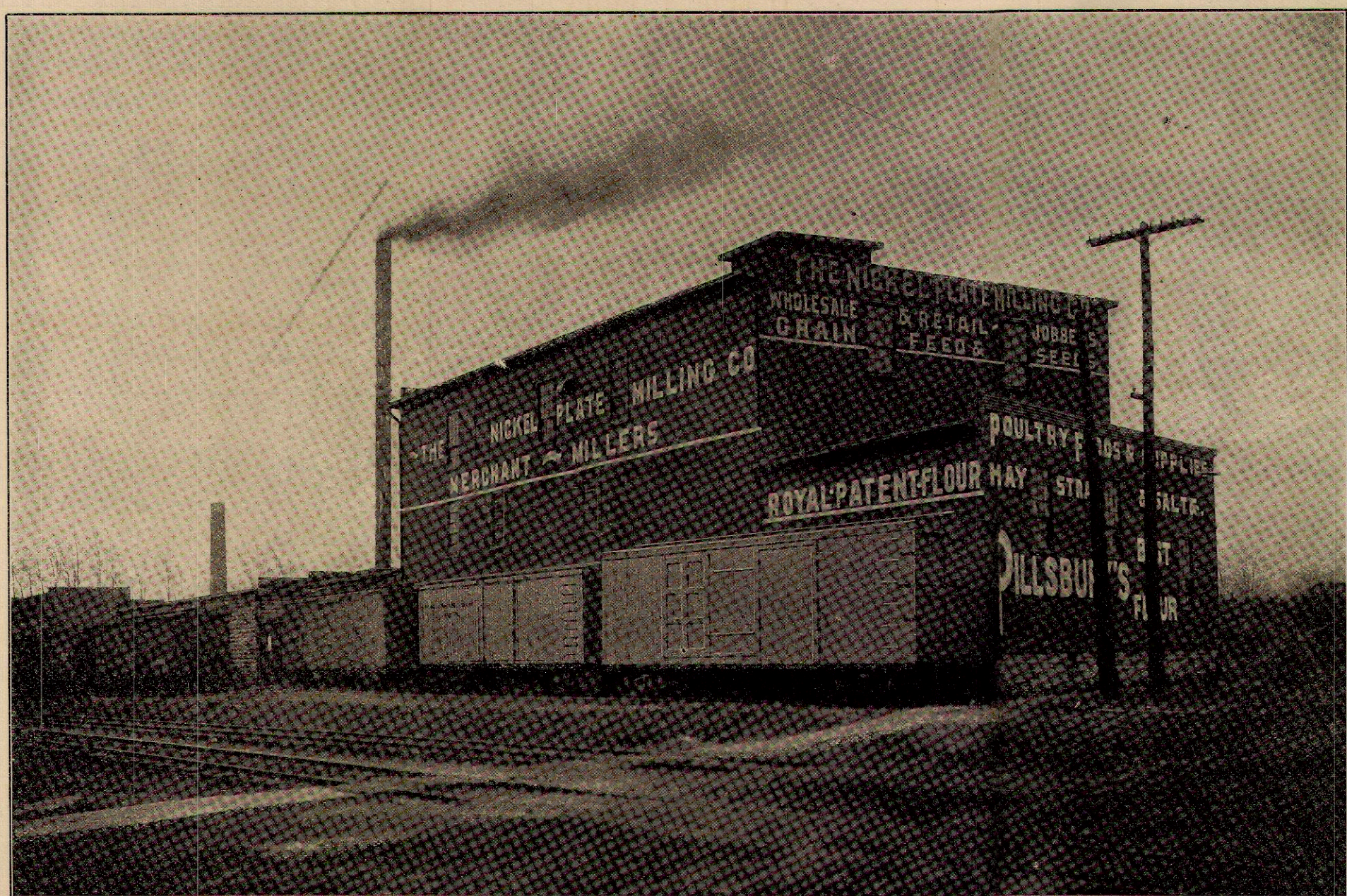
BOTH TELEPHONES No. 9 JACKSON ST. and B. & O. CROSSING

J. G. Wolff Coal Company

DEALERS IN

ANTHRACITE AND SOFT COAL

PAINESVILLE, OHIO



We make a Speciality of CUSTOM GRINDING

Wholesale and Retail Dealers in

Flour, Grain, Feed, Seeds, Hay, Straw, Salt, Poultry Supplies, Poultry Remedies

AGENTS FOR BLATCHFORD'S CALF MEAL.

THE NICKEL PLATE MILLING CO.

PAINESVILLE, OHIO.