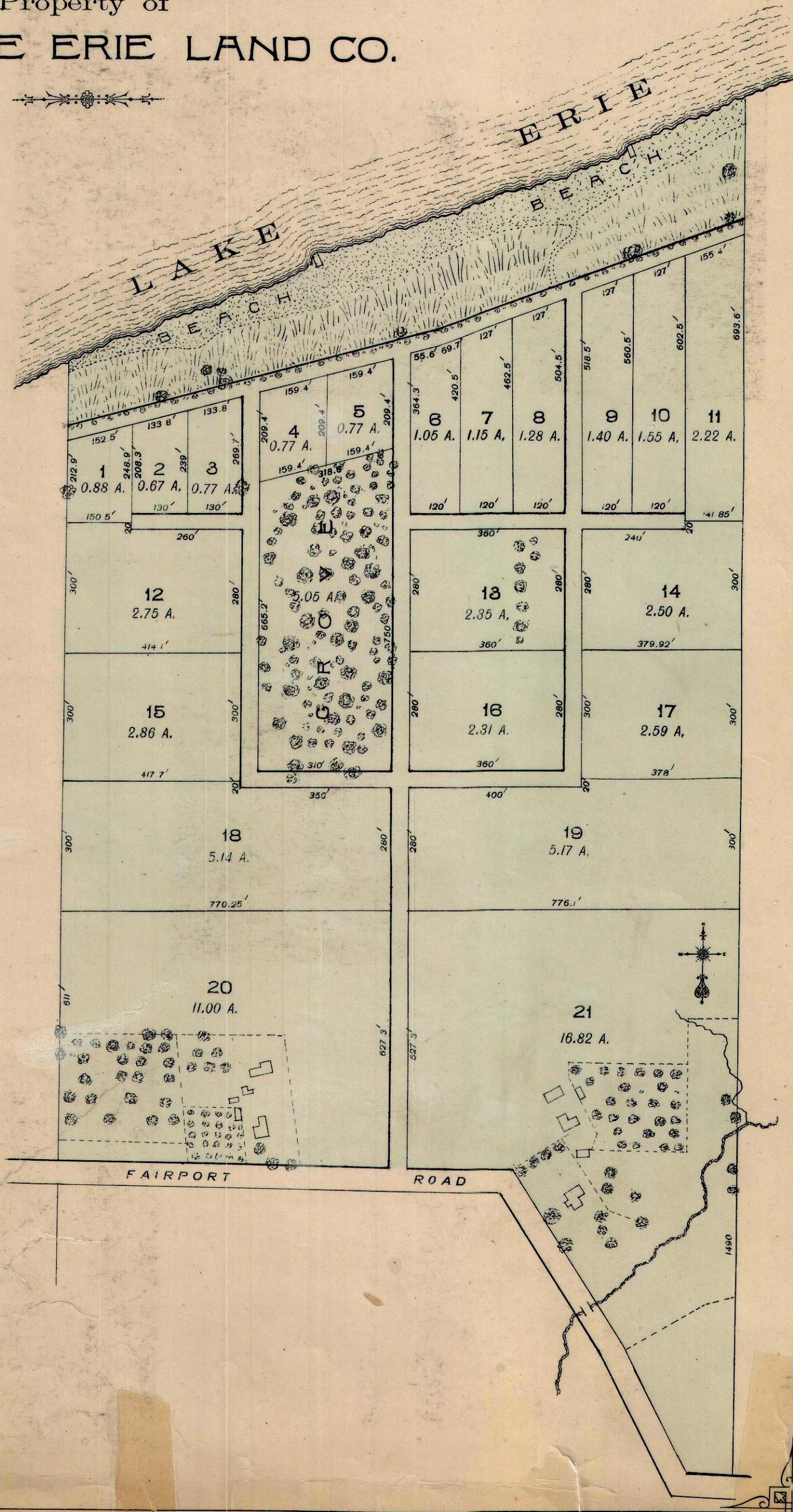


SHORELANDS.

Property of
THE LAKE ERIE LAND CO.



THE idea of a summer home on the banks of old Lake Erie has always been a fascinating one, but it has only been within a few years that its placid waters have proved irresistible.

Appreciating the demand for such property, a number of Painesville gentlemen have recently organized The Lake Erie Land Company, for the purpose of improving and beautifying a tract of lake-front land, known formerly as the Smart and Lathrop farms, lying on Lake Erie directly north of Painesville, which has been sub-divided into lots, and has been named "SHORELANDS."

This is an ideal spot for a summer residence. Two miles from the Lake Shore Railway, and thirty miles from Cleveland, makes it easy of access to business men, as Painesville and Cleveland are so closely connected, both by steam and electricity. At this point is one of the finest beaches in Lake County, and an elegant shady grove, several acres in extent, situated about two hundred feet from the top of the bank, makes a delightful retreat.

Roads have been laid out, breakwaters built, shade trees set out, and plans are now under way for a system of water-works.

Choice lots with wide frontage on either the lake or grove are offered at low prices, and acreage lots lying back a few hundred feet from the lake can be purchased at acreage prices.

For prices and full particulars call on or address,

The Lake Erie Land Company,
PAINESVILLE, OHIO.