

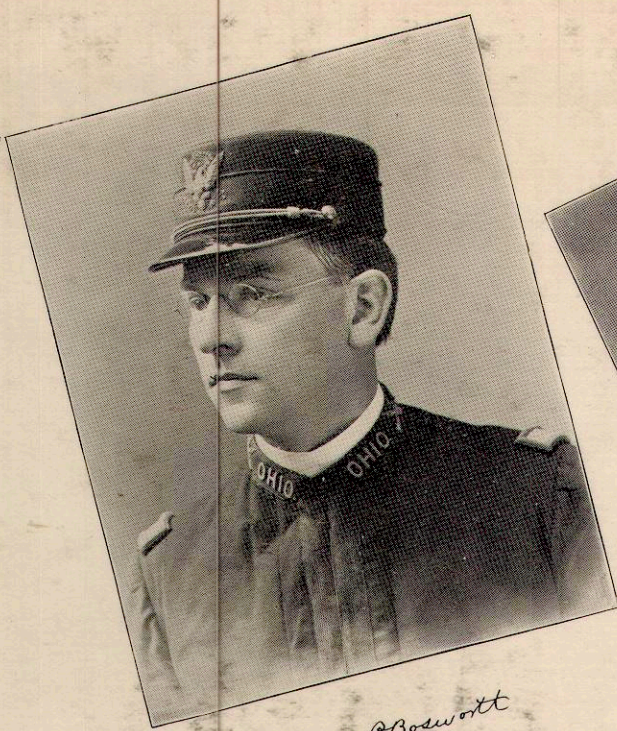
LAKE COUNTY OFFICIALS.



Calvin E. Ely  
Supt.



S. E. Ely  
Prosecuting Attorney



Harry P. Bennett  
Prosecuting Attorney



R. P. Confort  
County Clerk



A. N. Kinross  
Co. School Examiner



Walter C. Gridd  
Supt.



W. A. Alvarado  
Treasurer



J. D. Shankland  
Co. School Examiner



J. C. Pitt  
Co. Commissioner



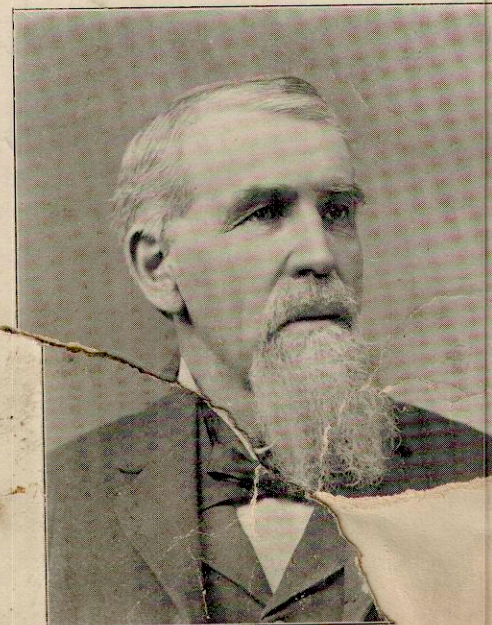
J. R. Kennerly  
Circuit Judge



J. P. Miller  
Co. Collector



Grant M. Barber  
Co. Sheriff



G. D. Clark  
Probate Judge



PHILIPS